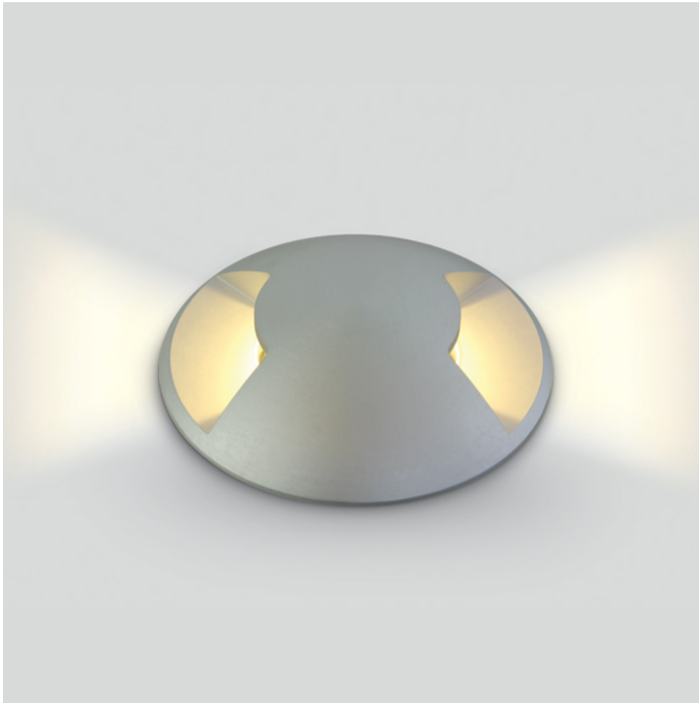


19 Wall Recessed & Inground>The Inground Medium Series LED Aluminium

69016/W

3W COB LED inground, aluminium, for path illumination., IK08, IP67.

Supplied with non-dimmable LED driver.

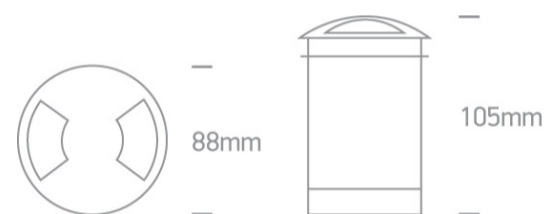
Complies with standard EN60598-1 and any other specific standards.



Downloads



Dimensions



Gallery



Physical Specification

Item Group

19 Wall Recessed & Inground

Family

The Inground Medium Series LED Aluminium

Order Code

69016/W

Colour

Aluminium

Material

Aluminium

Shape



Circular

Height

105mm

Diameter	88mm
Cutout Hole Diameter	77mm
Inground	Yes
Depth Required	105mm+300mm drainage
Indoor	Yes
Outdoor	Yes
IK Rating	8

Electrical Characteristics

Gear	Built In
Fitting + Driver	
Input Voltage	100-240V
50 Hz	Yes
60 Hz	Yes
Safety Class	
Power(Watts)	3W
IP Rating	IP67
Light Source	LED built in
Dimmable	No
Cable Length	200cm
F Mark	

Fitting	
Input Type	Constant Current
Input Current	350mA
Voltage	6V
Power(Watts)	2,8W
IP Rating	IP67
Light Source	LED built in
LED Type	SMD 1208

Gear

Gear Type

Led Driver

Input Voltage

100-240V

50 Hz

Yes

60 Hz

Yes

Power(Watts)

1-4W

Power Factor

0,5

Constant Current

Yes

350mA

3-11V

IP Rating

IP20

Safety Class



Dimmable

No

Ambient Temp

55°C

Housing Material

Plastic

Brand

Gallop

Illumination Data

Colour Temperature

3000K

Lumen Output

120lm

Light Efficiency

40lm/W

CRI

80

Illumination Diagram



Packing Info

Box Length

18,5cm

Box Width

12,5cm

Box Height

12,5cm

Box Weight

0,790Kg

Pcs/Carton

18

Завантажено з mamadecor.ua

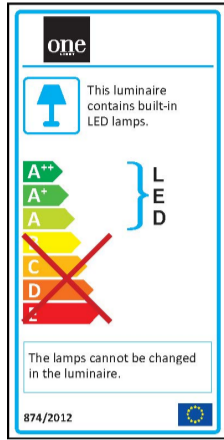
Barcode

5291889030171

HS Code

9405409900

Energy Label



Certification & Warranty

Warranty

2 Years

Average Lifetime

50000hours

Weee Directive

Yes

switch to
one light!

one
LIGHT

