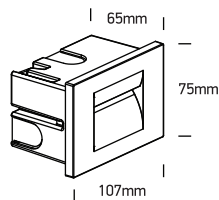


# INSTALLATION MANUAL

68064

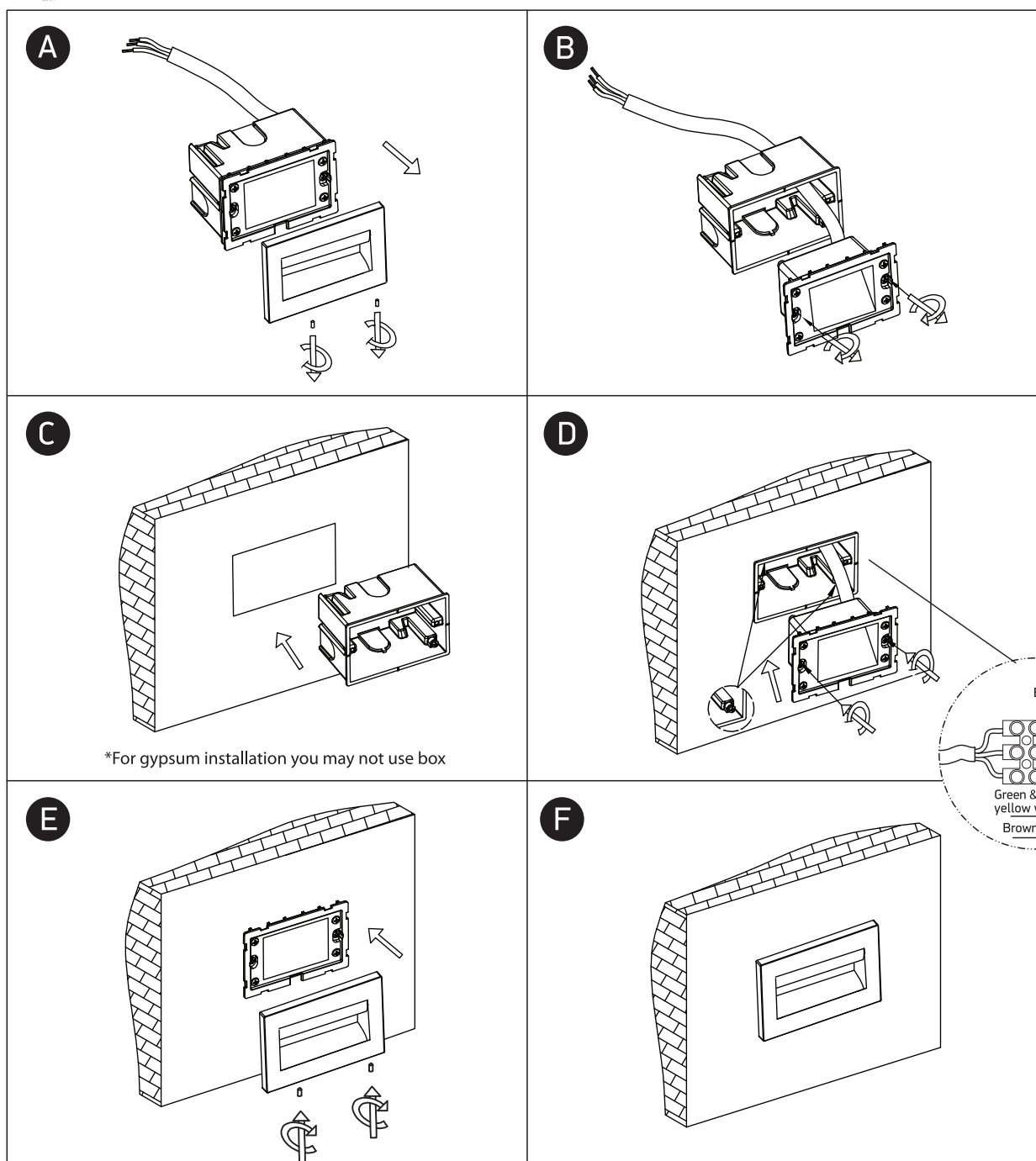
**ecolight**

**80**  
CRI

**one**  
LIGHT

100-240V | 3,6W | IP65 | Die cast

 Complete with driver.  
 Supplied with box for  
 concrete installation.
Concrete  
installationGypsum  
installation

65mm



## Warnings:

1. Make sure that the product is installed properly before connecting to electricity.
2. Do not cover the fitting.
3. Maintenance and installation should only be carried out by a professional electrician.