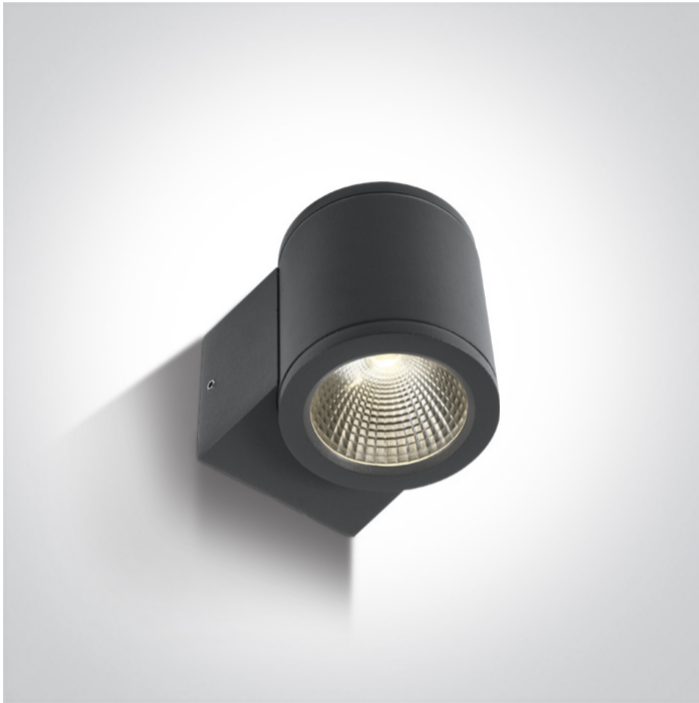


## 13 Wall &amp; Ceiling LED &gt; Outdoor Wall Cylinders

## 67138E/AN/W



6W Outdoor Wall Cylinder, IP54.

Complete with driver.

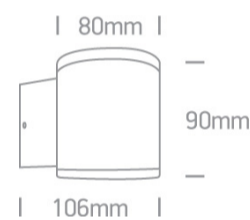
Complies with standard EN60598-1 and any other specific standards.



## Downloads






## Dimensions




## Physical Specification

Item Group	13 Wall & Ceiling LED
Family	Outdoor Wall Cylinders
Order Code	67138E/AN/W
Colour	Anthracite
Material	Die Cast
Shape	Circular
Height	90mm
Diameter	80mm
Surface Wall	Yes
Indoor	Yes
Outdoor	Yes

Gear		Built In	
Fitting + Driver			
Input Voltage		100-240V	
50 Hz		Yes	
60 Hz		Yes	
Safety Class			
Power(Watts)		6W	
IP Rating		IP54	
Light Source		LED built in	
Dimmable		No	
F Mark			

Fitting			
Input Type		Constant Current	
Input Current		500mA	
Voltage		10V	
Safety Class			
Power(Watts)		5W	
IP Rating		IP54	
Light Source		LED built in	
LED Type		COB	
LED Brand		Cree	

Gear			
Gear Type		Led Driver	
Input Voltage		100-240V	
50 Hz		Yes	
60 Hz		Yes	
Power(Watts)		3-6W	

Power Factor	0,5
Constant Current	Yes
500mA	6-12V
IP Rating	IP20
Safety Class	
Dimmable	No
Ambient Temp	50°C
Operating Temp	70°C
Brand	Eaglerise

### Illumination Data

Colour Temperature	3000K
Lumen Output	440lm
Light Efficiency	73,33lm/W
CRI	80
Beam Angle	35°
Illumination Diagram	

### Packing Info

Box Length	12cm
Box Width	9cm
Box Height	10cm
Box Weight	0.583kg
Pcs/Carton	12
Barcode	5291889042587
HS Code	9405409900

Certification & Warranty

Warranty

2 Years

Weee Directive

Yes

switch to  
**one light!**

one  
LIGHT

