

# INSTALLATION MANUAL

67514

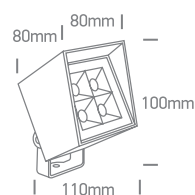
ecolight |          

230V | SMD2835 | 6W | IP65 | Aluminium | Adjustable

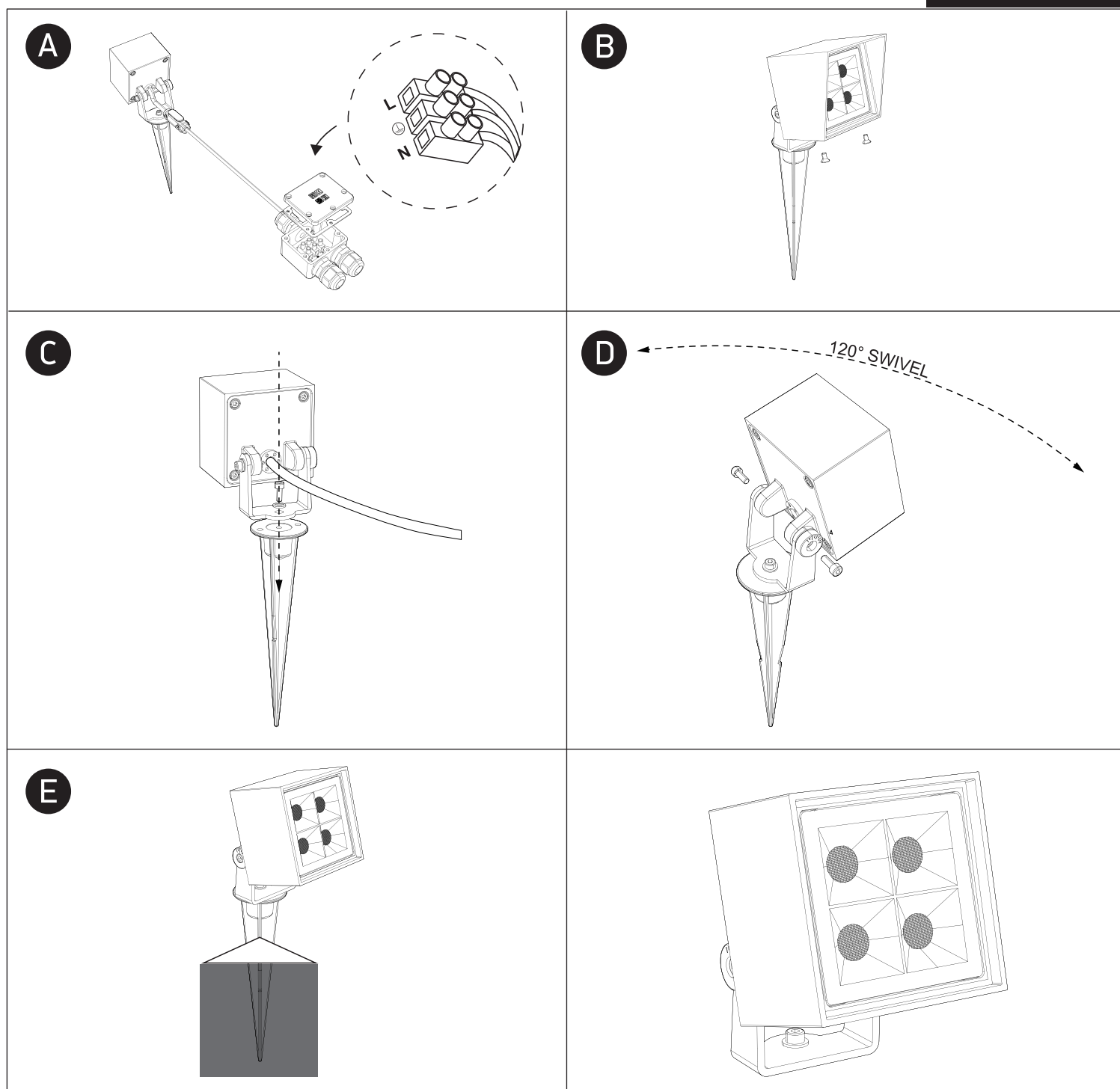
Complete with 700mA driver. Supplied with spike.

80  
CRI

200cm



one  
LIGHT



## Warnings:

1. Make sure that the product is installed properly before connecting to electricity.
2. Do not cover the fitting.
3. Maintenance and installation should only be carried out by a professional electrician.