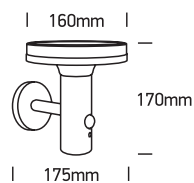


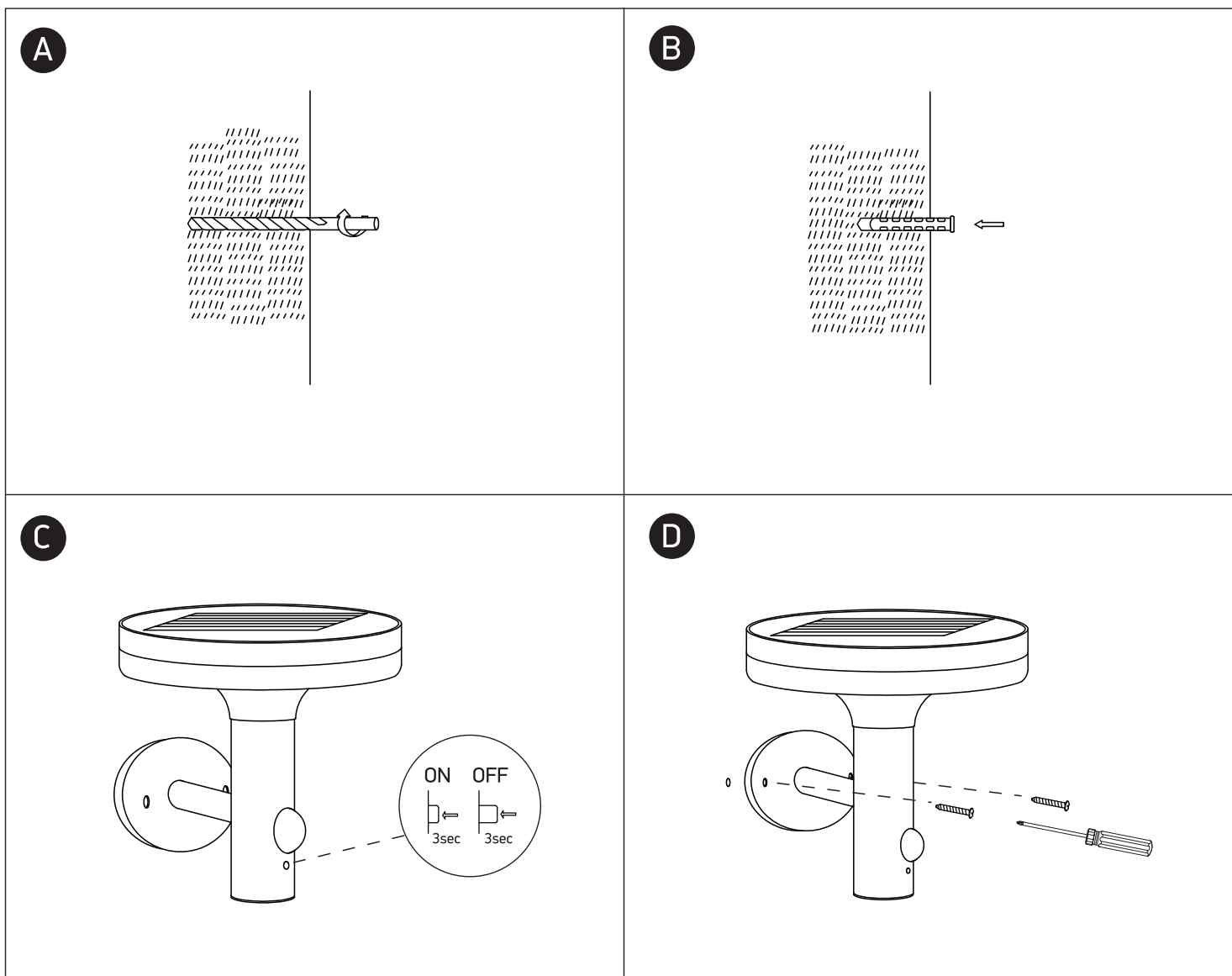
# INSTALLATION MANUAL

67500

**ecolight**
80  
CRI

6W | LED | IP44 | Solar powered | Sensor | Aluminium

1x2200mAh lithium battery / 3 Modes operation

**one**  
LIGHT

**PIR Sensor:**

Distance less or equal to 8m and within angle 120°

**ON/OFF operation:**

- Press 3 seconds to turn on/off the light

**Change mode:**

- Press 1 second

**Mode A:** • ON 75lm 8hours

**Mode B:** • ON 75lm  
• Detection 400lm

**Mode C:** • OFF  
• Detection 480lm

**Warnings:**

1. Battery have the function of overcharge and discharge protection.
2. Please do not change anything of Solar panel or battery.
3. Please understand that the work time will be effected when sunshine is not enough (rainy, cloudy or winter).
4. It needs to clean the solar surface periodically.