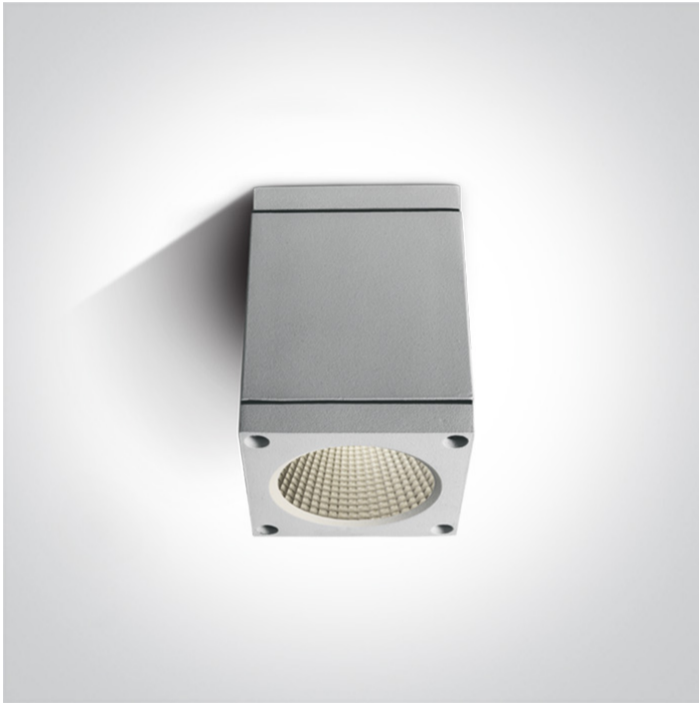


13 Wall &amp; Ceiling LED&gt;Outdoor Ceiling Cylinders Die cast

67138D/W/W



6W Outdoor Ceiling Cylinder, IP54.

Complete with driver.

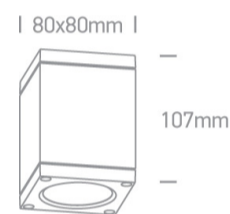
Complies with standard EN60598-1 and any other specific standards.



## Downloads





## Dimensions



## Physical Specification

Item Group	13 Wall & Ceiling LED
Family	Outdoor Ceiling Cylinders Die cast
Order Code	67138D/W/W
Colour	White
Material	Die Cast
Shape	Rectangular
Length	80mm
Width	80mm
Height	107mm
Surface Ceiling	Yes
Indoor	Yes
Outdoor	Yes

## Electrical Characteristics

Gear	Built In
Fitting + Driver	
Input Voltage	100-240V
50 Hz	Yes
60 Hz	Yes
Safety Class	
Power(Watts)	6W
IP Rating	IP54
Light Source	LED built in
Dimmable	No
F Mark	

Fitting	
Input Type	Constant Current
Input Current	500mA
Voltage	10V
Power(Watts)	5W
IP Rating	IP54
Light Source	LED built in
LED Type	COB
LED Brand	Edison

Gear	
Gear Type	Led Driver
Input Voltage	100-240V
50 Hz	Yes
60 Hz	Yes
Power(Watts)	3-6W
Power Factor	0,9

Constant Current
500mA
IP Rating
Safety Class
Dimmable
Ambient Temp
Operating Temp
Brand

Yes

6-12V

IP20



No

55°C

70°C

Eaglerise

## Illumination Data

Colour Temperature
Lumen Output
Light Efficiency
CRI
Beam Angle
Illumination Diagram

3000K

440lm

73,33lm/W

80

35°



## Packing Info

Box Length
Box Width
Box Height
Box Weight
Pcs/Carton
Barcode
HS Code

12cm

9cm

15cm

0.561kg

18

5291889042556

9405409900

Certification & Warranty

Warranty

2 Years

Weee Directive

Yes

switch to  
**one light!**

one  
LIGHT

