

07 Downlights Adjustable LED>The COB Square Downlights Die cast

51120B/W/W



20W COB LED Recessed adjustable downlight, COB square range, IP20.

Supplied with non-dimmable LED driver.

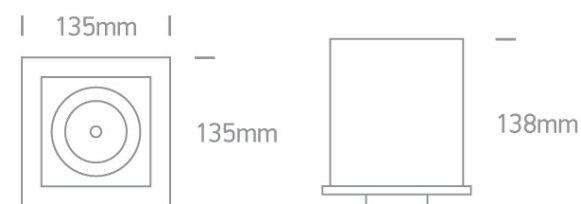
Complies with standard EN60598-1 and any other specific standards.



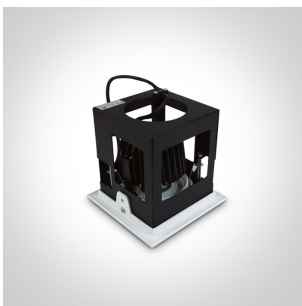
Downloads



Dimensions



Gallery



Physical Specification

Item Group

07 Downlights Adjustable LED

Family

The COB Square Downlights Die cast

Order Code

51120B/W/W

Colour

White

Material

Die Cast

Shape



Rectangular


Length


135mm

Width	135mm
Height	138mm
Cutout Hole Width	125mm
Cutout Hole Length	125mm
Recessed Ceiling	Yes
Depth Required	160mm
Indoor	Yes
Adjustable	2 Directions


Electrical Characteristics

Gear	External-Included
Fitting + Driver	
Input Voltage	220-240V
50 Hz	Yes
60 Hz	Yes
Safety Class	
Power(Watts)	20W
IP Rating	IP20
Light Source	LED built in
Dimmable	No
F Mark	

Fitting	
Input Type	Constant Current
Input Current	500mA
Voltage	37,3V
Safety Class	
Power(Watts)	18,65W
IP Rating	IP20
Light Source	LED built in

LED Type	COB
LED Brand	Citizen
Gear	
Gear Type	Led Driver
Input Voltage	220-240V
50 Hz	Yes
60 Hz	Yes
Power(Watts)	13,5-21W
Power Factor	0,9
Constant Current	Yes
500mA	27-42V
IP Rating	IP20
Safety Class	
Dimmable	No
Housing Material	Plastic

Illumination Data

Colour Temperature	3000K
Lumen Output	1500lm
Light Efficiency	75lm/W
CRI	80
Beam Angle	36°
Illumination Diagram	

Packing Info

Box Weight	1,15kg
Pcs/Carton	12
Barcode	5291889044789
HS Code	9405409900

Certification & Warranty

Warranty

3 Years

Weee Directive

Yes

switch to
one light!

one
LIGHT

