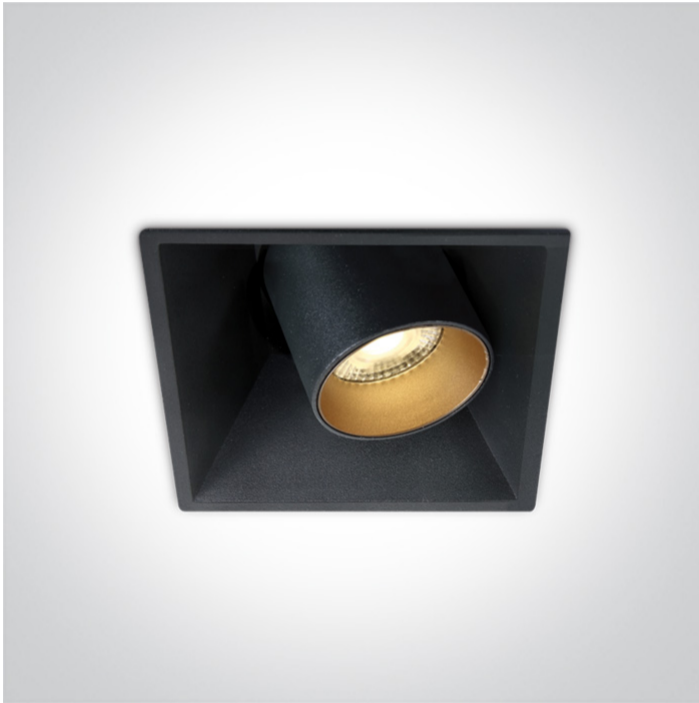


04 Recessed Spots Adjustable LED>The COB Recessed Cylinders

51111C/B/W

11W COB LED recessed adjustable spot, for general lighting applications.

Supplied with Black & Brass reflectors.

Complete with 250mA driver.

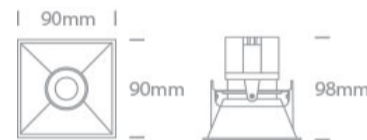
Complies with standard EN60598-1 and any other specific standards.



Downloads



Dimensions



Gallery



Physical Specification

Item Group

04 Recessed Spots Adjustable LED

Family

The COB Recessed Cylinders

Order Code

51111C/B/W

Colour

Black

Material

Die Cast

Shape



Rectangular

Length


90mm

Width	90mm
Height	98mm
Cutout Hole Width	85mm
Cutout Hole Length	85mm
Recessed Ceiling	Yes
Depth Required	110mm
Indoor	Yes
Adjustable	2 Directions

Electrical Characteristics

Gear	External-Included
Fitting + Driver	
Input Voltage	220-240V
50 Hz	Yes
60 Hz	Yes
Safety Class	
Power(Watts)	11W
IP Rating	IP20
Light Source	LED built in
Dimmable	No
F Mark	


Fitting	
Input Type	Constant Current
Input Current	250mA
Voltage	37V
Safety Class	
Power(Watts)	9,25W
IP Rating	IP20
Light Source	LED built in

LED Type	COB
LED Brand	Luminus
LED Number	1
F Mark	

Gear

Gear Type	Led Driver
Input Voltage	220-240V
50 Hz	Yes
60 Hz	Yes
Power(Watts)	7,5-12W
Power Factor	0,5
Constant Current	Yes
250mA	30-48V
IP Rating	IP20
Safety Class	
Dimmable	No
Housing Material	Plastic
Output Terminal	Cable
Brand	KEGU

Illumination Data

Colour Temperature	3000K
Lumen Output	820lm
Light Efficiency	74,5lm/W
CRI	90
Beam Angle	38°
Illumination Diagram	
Dark Light	Yes

Packing Info

Box Length	12cm
Box Width	12cm
Box Height	9,5cm
Pcs/Carton	20
Barcode	5291889059486
HS Code	9405409900

Certification & Warranty

Warranty	5 Years
Weee Directive	Yes

switch to
one light!

one
LIGHT

