

## 04 Recessed Spots Adjustable LED>The 1W Mini Series Aluminium

# 51101AL/D/15



1W LED adjustable recessed spot, mini series range, IP20.

Requires 350mA driver.

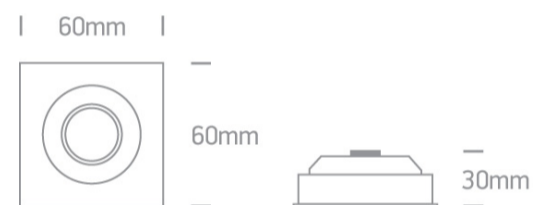
Complies with standard EN60598-1 and any other specific standards.



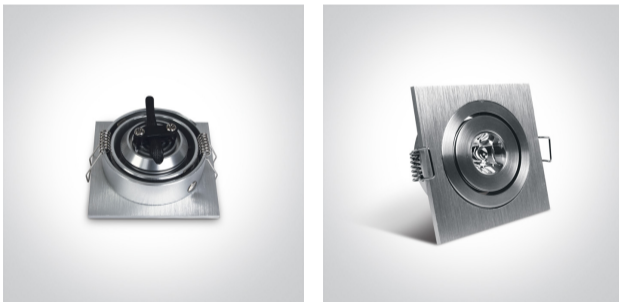
### Downloads



### Dimensions



### Gallery



### Must be ordered separately



89004




89004T

## Physical Specification

|                      |                                  |
|----------------------|----------------------------------|
| Item Group           | 04 Recessed Spots Adjustable LED |
| Family               | The 1W Mini Series Aluminium     |
| Order Code           | 51101AL/D/15                     |
| Colour               | Aluminium                        |
| Material             | Natural Aluminium                |
| Shape                | Rectangular                      |
| Length               | 60mm                             |
| Width                | 60mm                             |
| Height               | 30mm                             |
| Cutout Hole Diameter | 53mm                             |
| Recessed Ceiling     | Yes                              |
| Depth Required       | 40mm                             |
| Indoor               | Yes                              |
| Adjustable           | 2 Directions                     |

## Electrical Characteristics

## Fitting

|               |   |
|---------------|---|
| Input Type    | Constant Current  |
| Input Current | 350mA   |
| Safety Class  |  |
| Power(Watts)  | 1W  |
| IP Rating     | IP20  |
| Light Source  | LED built in  |
| LED Number    | 1   |
| Cable Length  | 40cm  |
| F Mark        |  |

## Illumination Data

|                      |   |
|----------------------|---|
| Colour Temperature   | 6000K   |
| Lumen Output         | 60lm  |
| Light Efficiency     | 60lm/W  |
| Beam Angle           | 15°   |
| Illumination Diagram |  |

## Packing Info

|            |               |
|------------|---------------|
| Pcs/Carton | 100           |
| Barcode    | 5291889004929 |
| HS Code    | 9405409900    |

## Certification &amp; Warranty

|                |         |
|----------------|---------|
| Warranty       | 2 Years |
| Weee Directive | Yes     |

switch to  
**one light!**

one  
LIGHT

