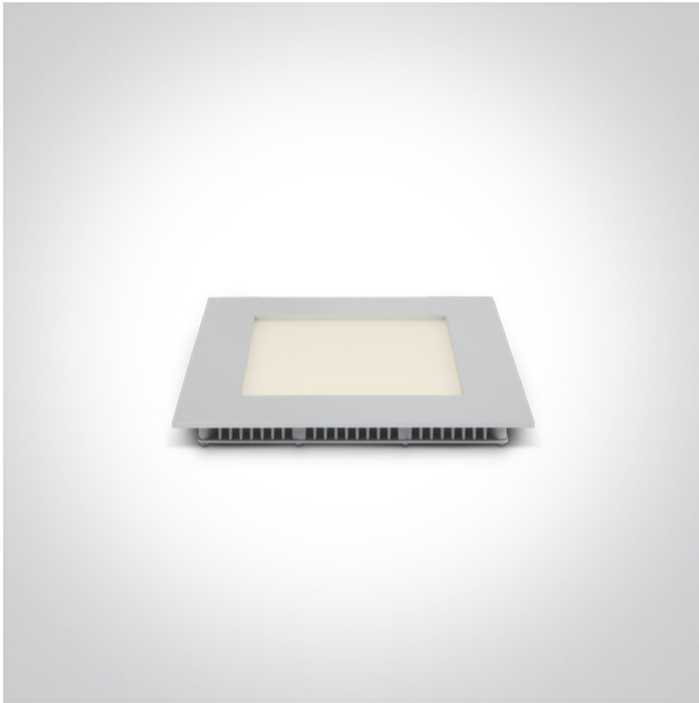


06 Downlights Fixed LED>The 8-16W Square Recessed Panels Die cast

50116FA/W/C

16W slim downlight LED, IP40, ideal for commercial applications such as offices, galleries and showrooms.

Supplied with 350mA non-dimmable LED driver.

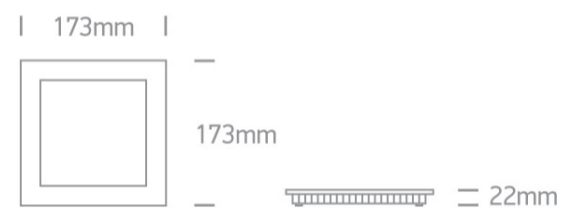
Complies with standard EN60598-1 and any other specific standards.



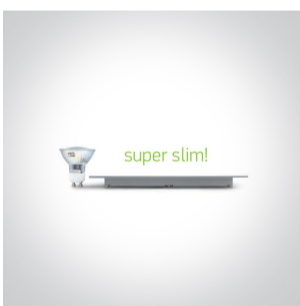
Downloads



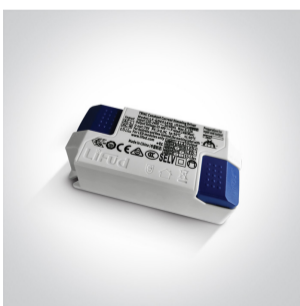
Dimensions



Gallery



Related items



89016UT

Physical Specification

Item Group

06 Downlights Fixed LED

Family

The 8-16W Square Recessed Panels Die cast

Order Code

50116FA/W/C

Завантажено з mamadecor.ua

Colour

White

Material

Die Cast

Diffuser Material

Acrylic

Shape

Rectangular

Length

173mm

Width

173mm

Height

22mm

Cutout Hole Width

155mm

Cutout Hole Length

155mm

Recessed Ceiling

Yes

Depth Required

50mm

Indoor

Yes

Adjustable

No

Electrical Characteristics

Gear

External-Included

Fitting + Driver

Input Voltage

220-240V

50 Hz

Yes

60 Hz

Yes

Safety Class



Power(Watts)

16W

IP Rating

IP40

Light Source

LED built in

Dimmable

No

F Mark




Fitting

Input Type

Constant Current


Input Current	350mA
Voltage	42V
Safety Class	
Power(Watts)	14,7W
IP Rating	IP40
Light Source	LED built in
LED Type	SMD 2835
LED Brand	Epistar
LED Number	84

Gear

Gear Type	Led Driver
Input Voltage	220-240V
50 Hz	Yes
60 Hz	Yes
Power(Watts)	9,5-14,7W
Power Factor	0,6
Constant Current	Yes
350mA	27-42V
IP Rating	IP20
Safety Class	
Dimmable	No
Ambient Temp	50°C
Operating Temp	75°C
Housing Material	Plastic
Brand	Lifud

Illumination Data

Colour Temperature	4000K
Lumen Output	1120lm
Light Efficiency	70lm/W

CRI	80
Beam Angle	120°
Illumination Diagram	

Packing Info

Box Length	23,6cm
Box Width	18cm
Box Height	18cm
Box Weight	0,460Kg
Pcs/Carton	30
Barcode	5291889044291
HS Code	9405109890

Certification & Warranty

Warranty	2 Years
Average Lifetime	30000 hours
Weee Directive	Yes

switch to
one light!

one
LIGHT

