

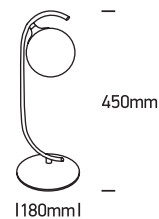
INSTALLATION MANUAL

61116

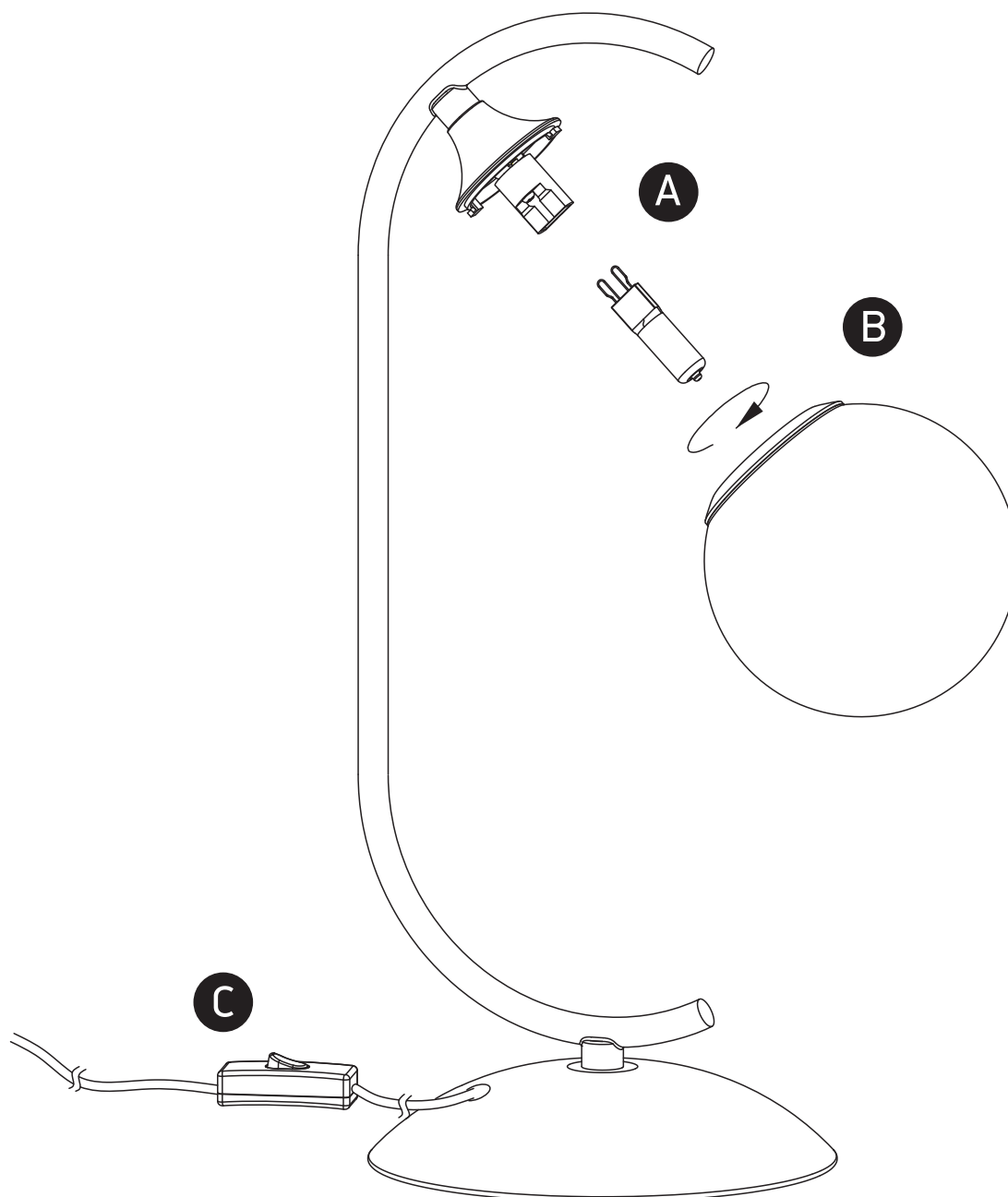


100-240V | G9 | 9W | IP20 | Steel

With ON/OFF Switch / EU Schuko plug.



one
LIGHT



Warnings:

1. Make sure that the product is installed properly before connecting to electricity.
2. Do not cover the fitting.
3. Maintenance and installation should only be carried out by a professional electrician.