

21 Industrial & Floodlights>The High Power IP65 LED Range Single

38158M/C

IP65 LED fitting to replace T8 IP65 traditional waterproof fluorescent. Stainless steel clips included. Polycarbonate body and diffuser.

Supplied with non-dimmable LED driver.

Complies with standard EN60598-1 and any other specific standards.



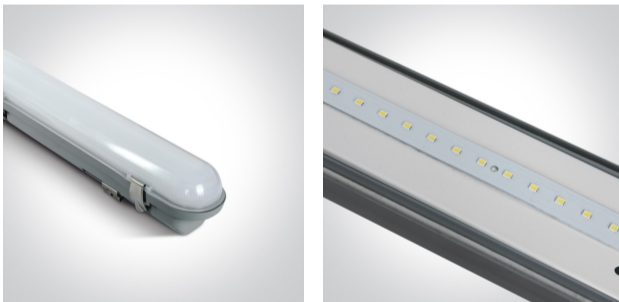
Downloads



Dimensions



Gallery



Physical Specification

Item Group

21 Industrial & Floodlights

Family

The High Power IP65 LED Range Single

Order Code

38158M/C

Colour

Grey

Material

PC

Diffuser Material



PC

Shape

Rectangular

Length	1515mm
Width	84mm
Height	80mm
Surface Ceiling	Yes
Surface Wall	Yes
Indoor	Yes
Outdoor	Yes
Adjustable	No
IK Rating	8

Electrical Characteristics

Gear	Built In
Fitting + Driver	
Input Voltage	220-240V
50 Hz	Yes
60 Hz	Yes
Safety Class	
Power(Watts)	40W
IP Rating	IP65
Light Source	LED built in
Dimmable	No
F Mark	

Fitting	
Input Type	Constant Current
Input Current	700mA
Voltage	54V
Power(Watts)	37,8W
IP Rating	IP65
Light Source	LED built in

LED Type

SMD 2835

Завантажено з mamadecor.ua

LED Brand

Everlight

Gear

Gear Type

Led Driver

Input Voltage

220-240V

50 Hz

Yes

60 Hz

Yes

Power(Watts)

14-42W

Power Factor

0,9

Constant Current

Yes

700mA

20-54V

IP Rating

IP20

Safety Class



Dimmable

No

Housing Material

Plastic

Output Terminal

Connector

Brand

Tridonic

Illumination Data

Colour Temperature

4000K

Lumen Output

4000lm

Light Efficiency

100lm/W

CRI

80

Illumination Diagram



Packing Info

Box Length

152cm

Box Width

8,3cm

Box Height

9cm

Box Weight

1,6Kg

[Завантажено з mamadecor.ua](http://mamadecor.ua)

Pcs/Carton

9

Barcode

5291889055013

HS Code

9405104090

Certification & Warranty

Warranty

3 Years

Weee Directive

Yes

switch to
one light!

one
LIGHT

