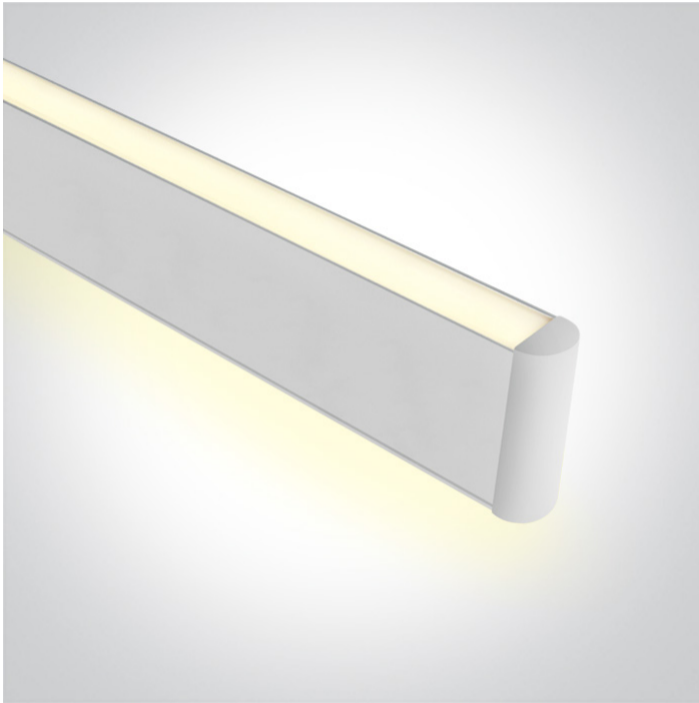


## 11 Office & Kitchen>Up & Down LED Linear Profiles

## 38140AU/W/W



40W suspended linear diffuser with uplight, ideal for offices.

Complete with 900mA driver and 3m suspension kit.

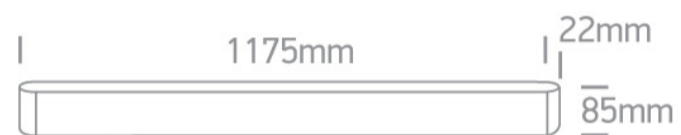
Complies with standard EN60598-1 and any other specific standards.



### Downloads



### Dimensions



### Gallery



### Physical Specification

Item Group

11 Office & Kitchen

Family

Up & Down LED Linear Profiles

Order Code

38140AU/W/W

Colour

White

Material

Aluminium

Diffuser Material



Plastic

Shape

Rectangular

|                   |        |
|-------------------|--------|
| Length            | 1175mm |
| Width             | 22mm   |
| Height            | 85mm   |
| Suspended Ceiling | Yes    |
| Indoor            | Yes    |
| Adjustable        | No     |

## Electrical Characteristics

|                  |   |
|------------------|---|
| Gear             | Built In  |
| Fitting + Driver |   |
| Input Voltage    | 220-240V  |
| 50 Hz            | Yes   |
| 60 Hz            | Yes   |
| Safety Class     |  |
| Power(Watts)     | 40W   |
| IP Rating        | IP20  |
| Light Source     | LED built in  |
| Dimmable         | No  |
| F Mark           |  |

|               |                  |
|---------------|------------------|
| Fitting       |                  |
| Input Type    | Constant Current |
| Input Current | 900mA            |
| Voltage       | 40V              |
| Power(Watts)  | 36W              |
| IP Rating     | IP20             |
| Light Source  | LED built in     |
| LED Type      | SMD 2835         |
| LED Brand     | Epistar          |

## Gear

Gear Type

Led Driver

Input Voltage

220-240V

50 Hz

Yes

60 Hz

Yes

Power(Watts)

27-38W

Power Factor

0,95

Constant Current

Yes

900mA

30-42V

IP Rating

IP20

Safety Class



Dimmable

No

Housing Material

Metal

Output Terminal

Connector

Brand

BOKE

## Illumination Data

Colour Temperature

3000K

Lumen Output

3600lm

Light Efficiency

90lm/W

CRI

90

Illumination Diagram



## Packing Info

Box Weight

2.058kg

Pcs/Carton

12

Barcode

5291889063919

HS Code

9405409900

Certification & Warranty

Warranty

3 Years

Weee Directive

Yes

switch to  
**one light!**

one  
LIGHT

