

08 Strips & Profiles > The LED Shelf System Accessories

38102A



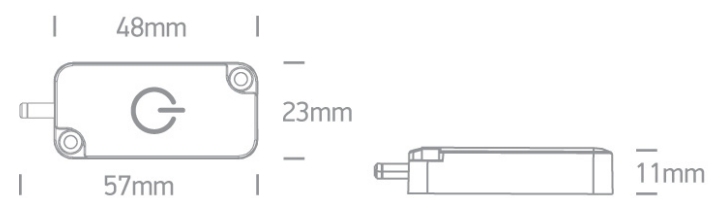
TOUCH ON/OFF AND DIMMER 60W 24V DC



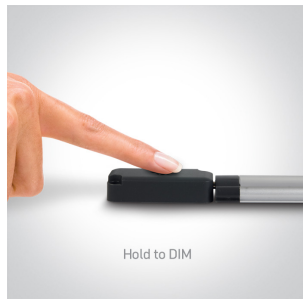
Downloads



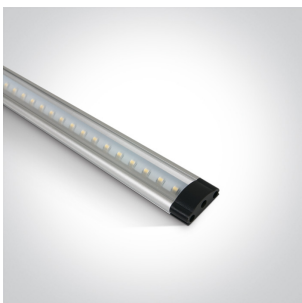
Dimensions



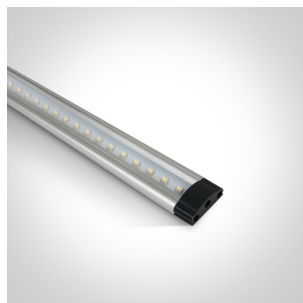
Gallery



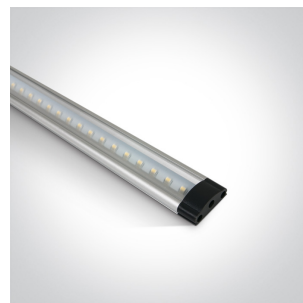
Accessories



38103/W



38105/W




38110/W

Physical Specification

Item Group	08 Strips & Profiles
Family	The LED Shelf System Accessories
Order Code	38102A
Shape	Rectangular
Length	57mm
Width	23mm
Height	11mm
Indoor	Yes

Electrical Characteristics

Gear	No
Fitting + Driver	
Input Voltage	24V DC
Safety Class	
Power(Watts)	60W

Packing Info

Pcs/Carton	100
Barcode	5291889038856
HS Code	8536508099

Warranty

2 Years

Weee Directive

Yes

switch to
one light!

one
LIGHT

