

# INSTALLATION MANUAL

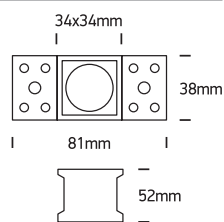
## 50103ATR

**ecolight**

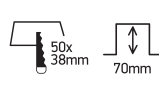
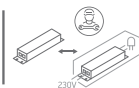


DARK  
LIGHT

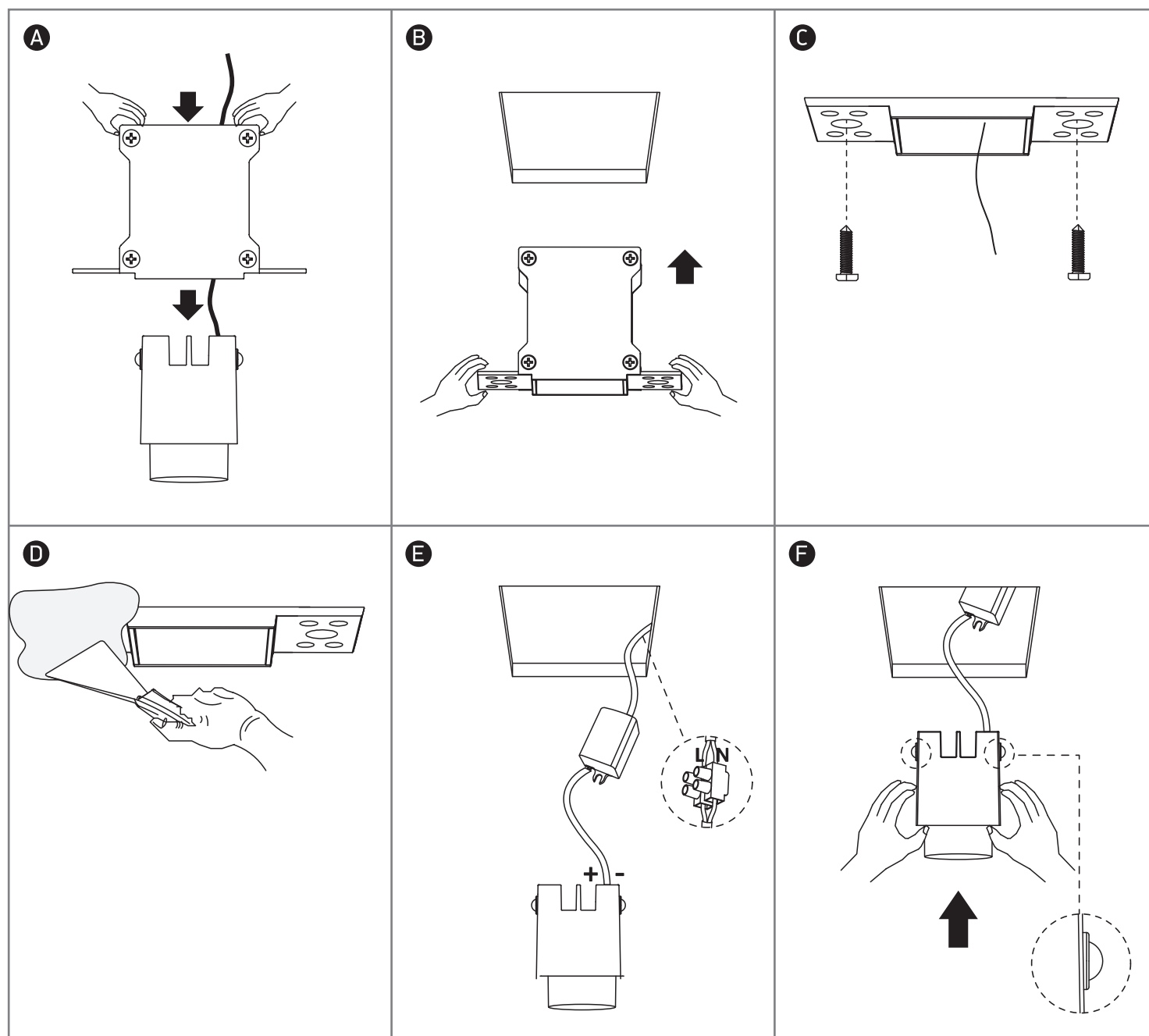
85  
CRI



230V | SMD 3535 | 3W | IP20 | Trimless | Die cast  
Complete with 700mA driver.



**one**  
LIGHT



### Warnings:

1. Make sure that the product is installed properly before connecting to electricity.
2. Do not cover the fitting.
3. Maintenance and installation should only be carried out by a professional electrician.