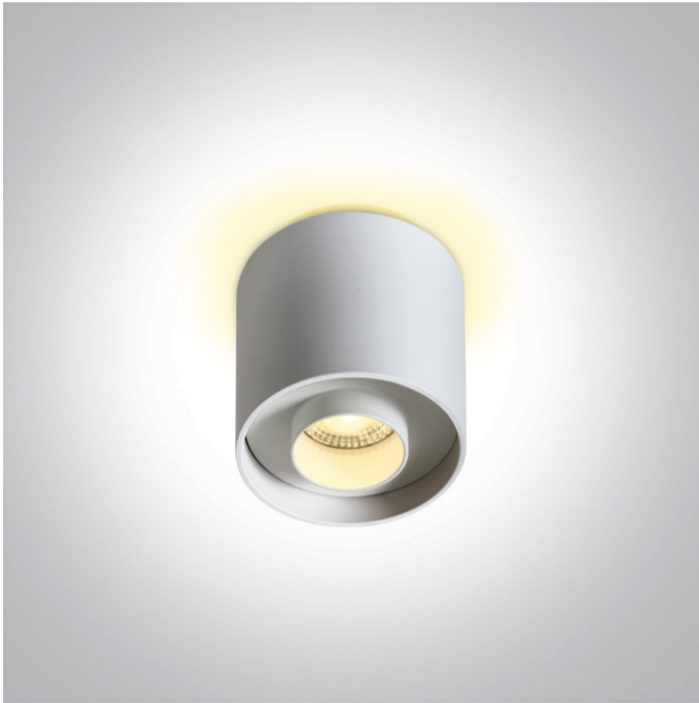


13 Wall & Ceiling LED>Dark Light Cylinders Tubes

12108DB/W/W



8W COB LED Cylinder with SMD backlit LED with exchangeable reflectors.

Reflector must be order separately.
Complete with non-dimmable LED driver.

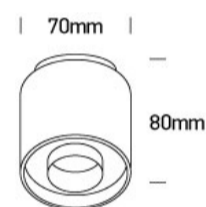
Complies with standard EN60598-1 and any other specific standards.



Downloads



Dimensions



Must be ordered separately



050206/B



050206/BS



050206/W

Physical Specification

Item Group

13 Wall & Ceiling LED

Family

Dark Light Cylinders Tubes

Order Code

12108DB/W/W

Colour

White

Material



Aluminium

Shape

Circular


Height	80mm
Diameter	70mm
Surface Ceiling	Yes
Indoor	Yes
Adjustable	No

Electrical Characteristics


Gear	Built In
Fitting + Driver	
Input Voltage	220-240V
50 Hz	Yes
60 Hz	Yes
Safety Class	
Power(Watts)	8W
IP Rating	IP20
Light Source	LED built in
Dimmable	No
F Mark	

Fitting	
Input Type	Constant Current
Input Current	700mA
Voltage	8,75V
Power(Watts)	6,125W
IP Rating	IP20
Light Source	LED built in
LED Type	COB
LED Brand	Bridgelux

Gear

Gear Type	Led Driver
Input Voltage	220-240V
50 Hz	Yes
60 Hz	Yes
Power(Watts)	3,5-6,3W
Power Factor	0,9
Constant Current	Yes
700mA	5-9V
IP Rating	IP20
Safety Class	
Dimmable	No
Housing Material	Plastic
Brand	KEGU

Illumination Data

Colour Temperature	3000K
Lumen Output	320lm + 100lm
Light Efficiency	52,5lm/W
CRI	90
Beam Angle	36°
Illumination Diagram	
Dark Light	Yes

Packing Info

Box Length	7,5cm
Box Width	7,5cm
Box Height	9cm
Box Weight	0.260kg
Pcs/Carton	50
Barcode	5291889070771

Certification & Warranty

Warranty

3 Years

Weee Directive

Yes

switch to
one light!

one
LIGHT

