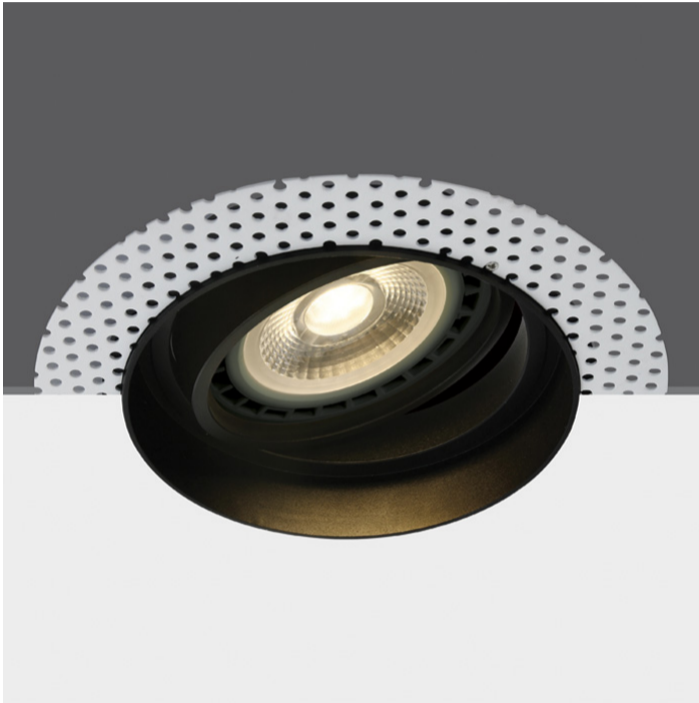


05 Downlights&gt;The R111 Trimless Shop Range Die cast

11110ATR/B



Recessed adjustable R111 trimless shop range with GU10 lampholder.

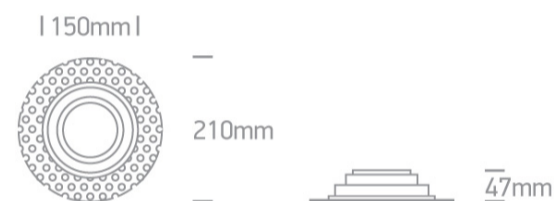
Complies with standard EN60598-1 and any other specific standards.



## Downloads



## Dimensions



## Gallery



## Physical Specification

Item Group

05 Downlights

Family

The R111 Trimless Shop Range Die cast

Order Code

11110ATR/B

Colour

Black

Material

Die Cast

Shape



Circular

Height

47mm

Diameter	210mm
Cutout Hole Diameter	170mm
Recessed Ceiling	Yes
Depth Required	150mm
Indoor	Yes
Adjustable	2 Directions

## Electrical Characteristics

Gear	No
Fitting + Driver	
Input Voltage	100-240V
50 Hz	Yes
60 Hz	Yes
Safety Class	
Power(Watts)	75W
IP Rating	IP20
Light Source	Replaceable lamp
Lamp Holder	GU10
Number of Lamps	1
Dimmable	N/A
Cable Length	20cm
F Mark	

## Illumination Data

Illumination Diagram



## Packing Info

Box Length	21,5cm
Box Width	21,5cm

Box Height	7cm
Box Weight	0,66Kg
Pcs/Carton	10
Carton Length	45cm
Carton Width	23cm
Carton Height	38cm
Carton Weight	6,7Kg
Barcode	5291889057208
HS Code	9405409900

### Certification & Warranty

Warranty	5 Years
Weee Directive	Yes

switch to  
**one light!**

one  
LIGHT

