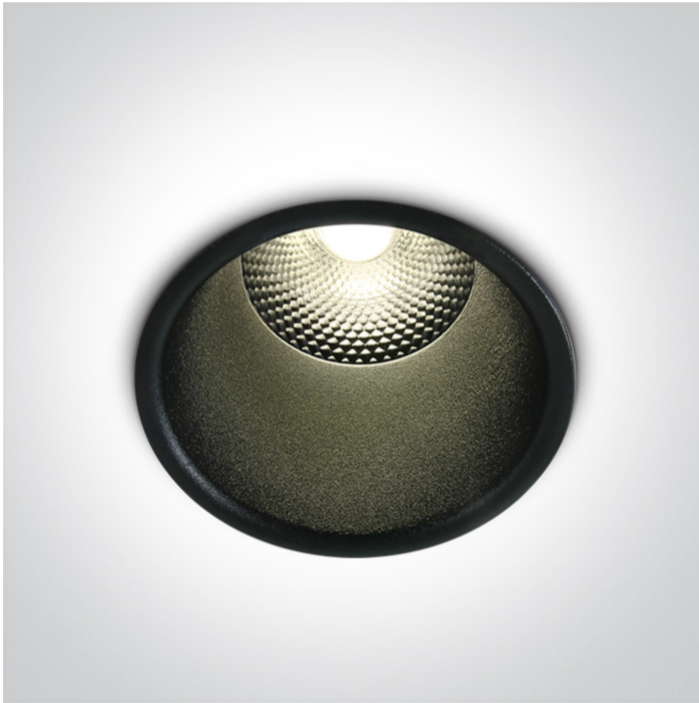


02 Recessed Spots Fixed LED>The Dark Light Pro Range Aluminium

10110FD/B/W



10W COB LED recessed spot, IP20, for general lighting applications.

Supplied with non-dimmable LED driver.

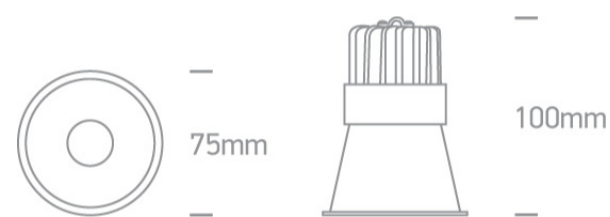
Complies with standard EN60598-1 and any other specific standards.



Downloads



Dimensions



Gallery



Physical Specification

Item Group

02 Recessed Spots Fixed LED

Family

The Dark Light Pro Range Aluminium

Order Code

10110FD/B/W

Colour

Black

Material

Aluminium

Shape



Circular


Height

100mm

| | |
|----------------------|-------|
| Diameter | 75mm |
| Cutout Hole Diameter | 68mm |
| Recessed Ceiling | Yes |
| Depth Required | 130mm |
| Indoor | Yes |
| Adjustable | No |

Electrical Characteristics

| Gear | External-Included |
|------------------|---|
| Fitting + Driver | |
| Input Voltage | 220-240V |
| 50 Hz | Yes |
| 60 Hz | Yes |
| Safety Class |  |
| Power(Watts) | 10W |
| IP Rating | IP20 |
| Light Source | LED built in |
| Dimmable | No |
| F Mark |  |

| Fitting | |
|---------------|---|
| Input Type | Constant Current |
| Input Current | 300mA |
| Voltage | 30V |
| Safety Class |  |
| Power(Watts) | 9W |
| IP Rating | IP20 |
| Light Source | LED built in |
| LED Type | COB |
| LED Brand | Epistar |

LED Number

1

Завантажено з mamadecor.ua

F Mark



Gear

Gear Type

Led Driver

Input Voltage

220-240V

50 Hz

Yes

60 Hz

Yes

Power(Watts)

7,5-12,6W

Power Factor

0,9

Constant Current

Yes

300mA

25-42V

IP Rating

IP20

Safety Class



Dimmable

No

Housing Material

Plastic

Brand

LIFUD

Illumination Data

Colour Temperature

3000K

Lumen Output

800lm

Light Efficiency

80lm/W

CRI

80

Beam Angle

24°

Illumination Diagram



Dark Light

Yes

Packing Info

Box Length

11cm

Box Width

9cm

| | |
|------------|---------------|
| Box Height | 12cm |
| Pcs/Carton | 50 |
| Barcode | 5291889057376 |
| HS Code | 9405409900 |

Certification & Warranty

| | |
|----------------|---------|
| Warranty | 2 Years |
| Weee Directive | Yes |

switch to
one light!

one
LIGHT

