

06 Downlights Fixed LED>UGR19 Adjustable CCT Range

10107UV/W



7W SMD LED UGR19 downlight with adjustable CCT, IP44.

Complete with 200mA driver.

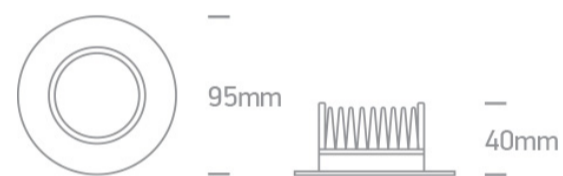
Complies with standard EN60598-1 and any other specific standards.



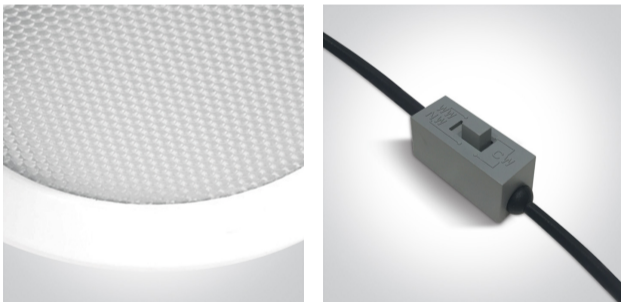
Downloads



Dimensions



Gallery



Physical Specification

Item Group

06 Downlights Fixed LED

Family

UGR19 Adjustable CCT Range

Order Code

10107UV/W

Colour

White

Material

Die Cast

Shape



Circular

Height

40mm

| | |
|----------------------|------|
| Diameter | 95mm |
| Cutout Hole Diameter | 70mm |
| Recessed Ceiling | Yes |
| Depth Required | 60mm |
| Indoor | Yes |
| Adjustable | No |
| IK Rating | 4 |

Electrical Characteristics

| | |
|------------------|---|
| Gear | External-Included |
| Fitting + Driver | |
| Input Voltage | 220-240V |
| 50 Hz | Yes |
| 60 Hz | Yes |
| Safety Class |  |
| Power(Watts) | 7W |
| IP Rating | IP44 |
| Light Source | LED built in |
| Dimmable | No |
| F Mark |  |

| | |
|---------------|---|
| Fitting | |
| Input Type | Constant Current |
| Input Current | 180mA |
| Voltage | 38V |
| Safety Class |  |
| Power(Watts) | 6,84W |
| IP Rating | IP44 |
| Light Source | LED built in |
| LED Type | SMD 2835 |

LED Brand

Epistar

Завантажено з mamadecor.ua

F Mark



Gear

Gear Type

Led Driver

Input Voltage

220-240V

50 Hz

Yes

60 Hz

Yes

Power(Watts)

5,4-8,4W

Power Factor

0,9

Constant Current

Yes

Output

180mA

Voltage Range

25-42V

IP Rating

IP44

Safety Class



Dimmable

No

Housing Material

Plastic

Output Terminal

Cable

Brand

Lifud

Protection

Short Circuit and Overload

Illumination Data

Colour Temperature

3000K-4000K-6000K

Lumen Output

525lm

Light Efficiency

75lm/W

CRI

80

Illumination Diagram



UGR

19

Packing Info

Pcs/Carton

40

Завантажено з mamadecor.ua

Barcode

5291889064817

HS Code

9405409900

Certification & Warranty

Warranty

3 Years

Average Lifetime

30000hrs

Weee Directive

Yes

switch to
one light!

one
LIGHT

