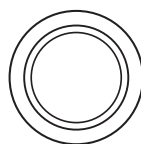


# INSTALLATION MANUAL

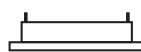
## 11110R



140mm



80mm



35mm

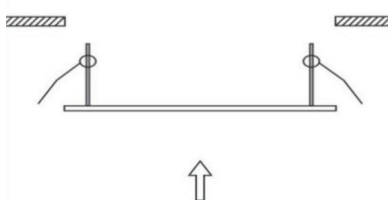


25cm

12V | G53 | 75W | IP20 | Die cast | Adjustable

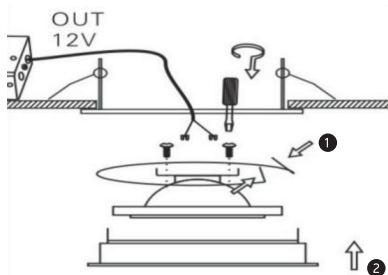


**A**

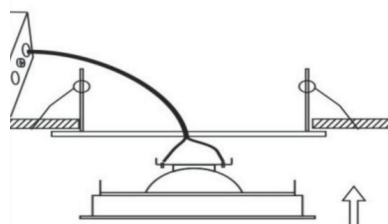


Base must be ordered separately

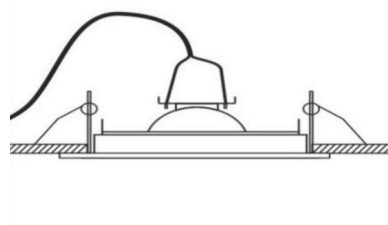
**B**



**C**



**D**



### Warnings:

1. Make sure that the product is installed properly before connecting to electricity.
2. Do not cover the fitting.
3. Maintenance and installation should only be carried out by a professional electrician.