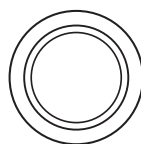


INSTALLATION MANUAL

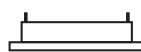
11110R



140mm



80mm



35mm

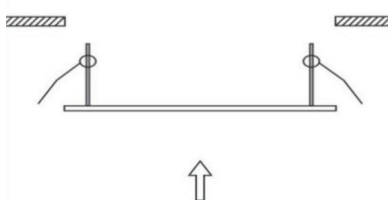


25cm

12V | G53 | 75W | IP20 | Die cast | Adjustable

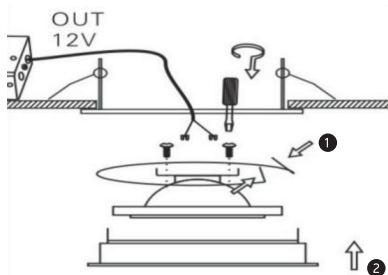


A

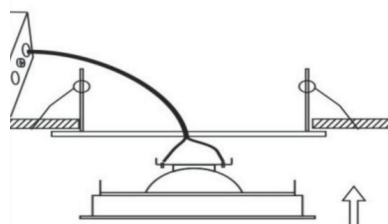


Base must be
ordered separately

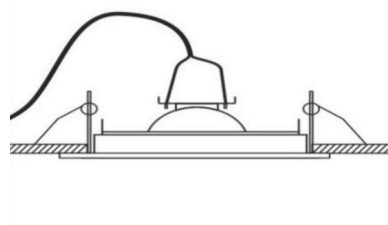
B



C



D



Warnings:

1. Make sure that the product is installed properly before connecting to electricity.
2. Do not cover the fitting.
3. Maintenance and installation should only be carried out by a professional electrician.