

## 04 Recessed Spots Adjustable LED&gt;The COB Fire Rated Range

## 11106PF/W



6W LED Fire Rated Recessed adjustable spot, IP20.

Requires 350mA driver.

Complies with standard EN60598-1 and any other specific standards.

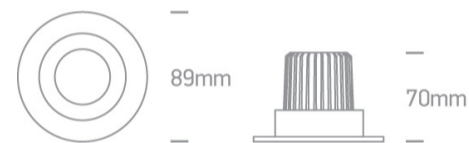


## Downloads



## Dimensions

Dimensions are complete with the ring.



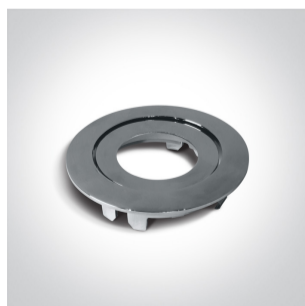
## Gallery



## Must be ordered separately



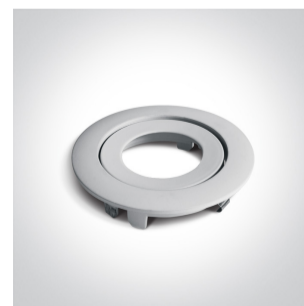
050044/B



050044/C



050044/MC



050044/W





89008


## Physical Specification

|                      |                                  |
|----------------------|----------------------------------|
| Item Group           | 04 Recessed Spots Adjustable LED |
| Family               | The COB Fire Rated Range         |
| Order Code           | 11106PF/W                        |
| Colour               | White                            |
| Material             | Die Cast                         |
| Shape                | Circular                         |
| Height               | 70mm                             |
| Diameter             | 89mm                             |
| Cutout Hole Diameter | 75mm                             |
| Recessed Ceiling     | Yes                              |
| Depth Required       | 90mm                             |
| Indoor               | Yes                              |
| Adjustable           | 1 Direction                      |

## Electrical Characteristics

## Fitting

|               |   |
|---------------|---|
| Input Type    | Constant Current  |
| Input Current | 350mA   |
| Safety Class  |  |
| Power(Watts)  | 6W  |
| IP Rating     | IP20  |
| Light Source  | LED built in  |
| LED Type      | COB   |
| LED Brand     | Bridgelux   |
| LED Number    | 1   |
| Cable Length  | 40cm  |
| F Mark        |  |

|                      |   |
|----------------------|---|
| Colour Temperature   | 3000K   |
| Lumen Output         | 500lm   |
| Light Efficiency     | 83,33lm/W   |
| CRI                  | 80  |
| Beam Angle           | 40°   |
| Illumination Diagram |  |

## Packing Info

|            |               |
|------------|---------------|
| Box Length | 12cm          |
| Box Width  | 11cm          |
| Box Height | 8,5cm         |
| Box Weight | 0,322Kg       |
| Pcs/Carton | 20            |
| Barcode    | 5291889047162 |
| HS Code    | 9405409900    |

## Certification &amp; Warranty

|                |         |
|----------------|---------|
| Warranty       | 3 Years |
| Weee Directive | Yes     |

switch to  
**one light!**

one  
LIGHT

