

## 04 Recessed Spots Adjustable LED&gt;The 1W/2W Mini Series Aluminium

11103B/W/W



1W/2W COB LED adjustable recessed spot IP20.

Requires 350mA/700mA driver.

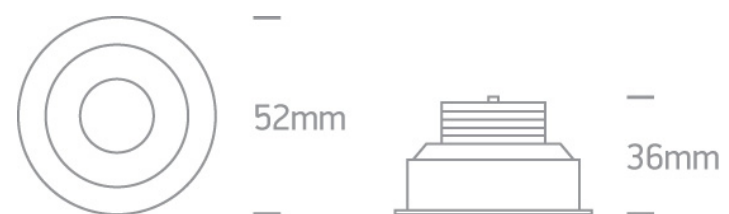
Complies with standard EN60598-1 and any other specific standards.



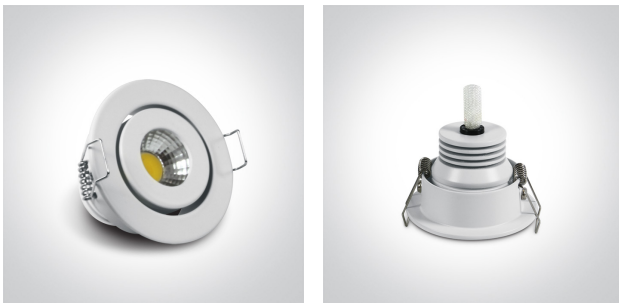
## Downloads



## Dimensions



## Gallery



## Must be ordered separately



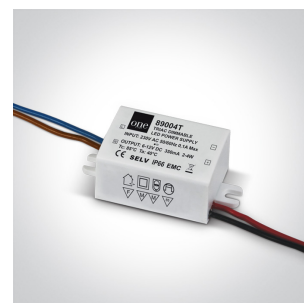
89004



89004A



89004AT





89004T


## Physical Specification

Item Group	04 Recessed Spots Adjustable LED
Family	The 1W/2W Mini Series Aluminium
Order Code	11103B/W/W
Colour	White
Material	Aluminium
Shape	Circular
Height	36mm
Diameter	52mm
Cutout Hole Diameter	45mm
Recessed Ceiling	Yes
Depth Required	60mm
Indoor	Yes
Adjustable	1 Direction

## Electrical Characteristics

## Fitting

Input Type	Constant Current
Input Current	350mA/700mA
Safety Class	
Power(Watts)	1W/2W
IP Rating	IP20
Light Source	LED built in
LED Type	COB
LED Brand	Bridgelux
LED Number	1
Cable Length	40cm
F Mark	

Colour Temperature	3000K
Lumen Output	200lm@700mA
Light Efficiency	100lm/W
CRI	90
Beam Angle	40°
Illumination Diagram	

## Packing Info

Box Length	9cm
Box Width	6cm
Box Height	5,5cm
Box Weight	0,080kg
Pcs/Carton	100
Barcode	5291889042464
HS Code	9405409900

## Certification &amp; Warranty

Warranty	5 Years
Weee Directive	Yes

switch to  
**one light!**

one  
LIGHT

