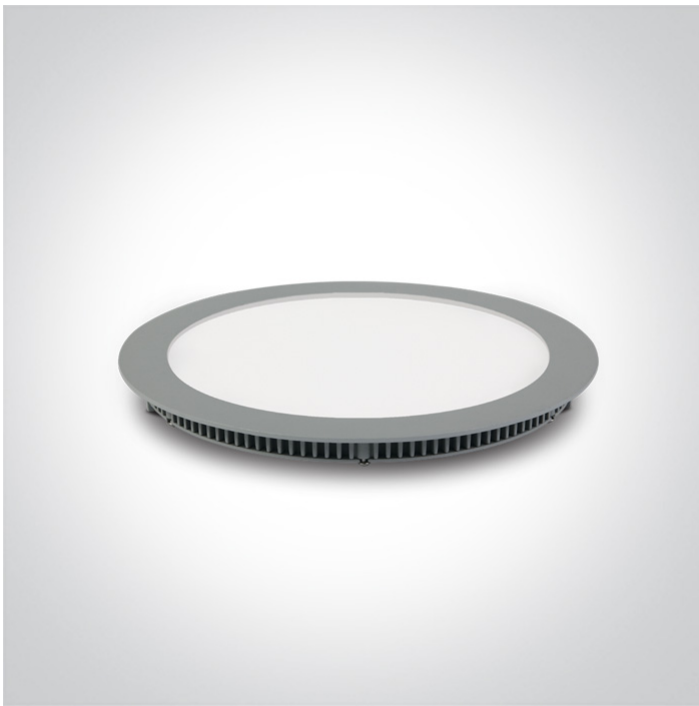


06 Downlights Fixed LED>The 18-30W Round Recessed Panels Die cast

10120F/G/D



30W slim downlight LED, IP40, ideal for commercial applications such as offices, galleries and showrooms.

Supplied with 1000mA non-dimmable LED driver.

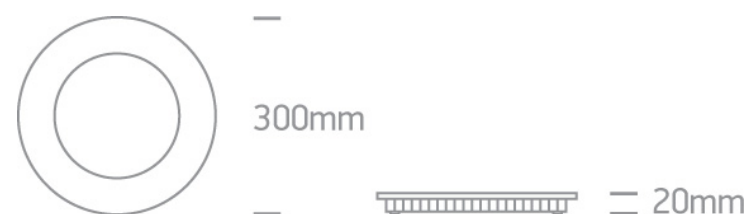
Complies with standard EN60598-1 and any other specific standards.



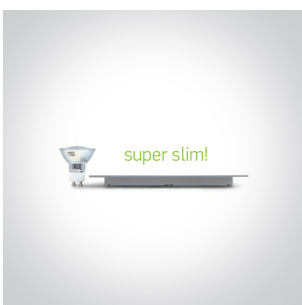
Downloads



Dimensions



Gallery



Physical Specification

Item Group

06 Downlights Fixed LED

Family

The 18-30W Round Recessed Panels Die cast

Order Code

10120F/G/D

Colour

Grey

Material

Die Cast

Diffuser Material



Acrylic

Shape

Circular

Height	20mm
Diameter	300mm
Cutout Hole Diameter	285mm
Recessed Ceiling	Yes
Depth Required	40mm
Indoor	Yes
Adjustable	No

Electrical Characteristics

Gear	External-Included
Fitting + Driver	
Input Voltage	100-240V
50 Hz	Yes
60 Hz	Yes
Safety Class	
Power(Watts)	30W
IP Rating	IP40
Light Source	LED built in
Dimmable	No
F Mark	

Fitting	
Input Type	Constant Current
Input Current	1000mA
Voltage	28V
Safety Class	
Power(Watts)	28W
IP Rating	IP40
Light Source	LED built in
LED Type	SMD 2016

LED Brand

Epistar

Завантажено з mamadecor.ua

LED Number

208

Gear

Gear Type

Led Driver

Input Voltage

100-240V

50 Hz

Yes

60 Hz

Yes

Power(Watts)

23-28W

Power Factor

0,9

Constant Current

Yes

1000mA

23-28V

IP Rating

IP20

Safety Class



Dimmable

No

Ambient Temp

40°C

Operating Temp

85°C

Housing Material

Plastic

Brand

One Light

Protection

Open Circuit/Short Circuit

Illumination Data

Colour Temperature

6000K

Lumen Output

1997lm

Light Efficiency

66,56lm/W

CRI

80

Beam Angle

120°

Illumination Diagram



Packing Info

Box Length	38cm
Box Width	31cm
Box Height	3cm
Box Weight	1,13Kg
Pcs/Carton	10
Barcode	5291889034988
HS Code	9405409900

Certification & Warranty

Warranty	2 Years
Average Lifetime	30000 hours
Weee Directive	Yes

switch to
one light!

