

06 Downlights Fixed LED>Round Downlights

10120/C



20W LED recessed downlight with interchangeable rings, IP44.
Ideal for general lighting applications.

Rings must be order separately.

Complete with 320mA driver.

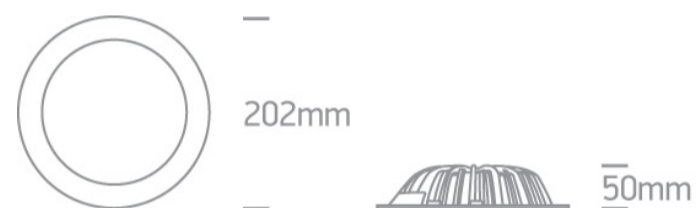
Complies with standard EN60598-1 and any other specific standards.



Downloads



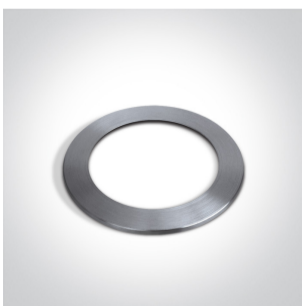
Dimensions



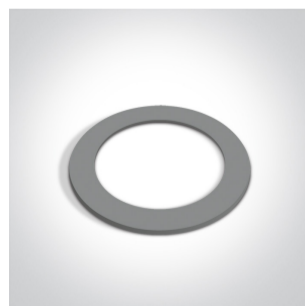
Gallery



Must be ordered separately



10100/AL



10100/G





10100/W

Physical Specification

Item Group	06 Downlights Fixed LED
Family	Round Downlights
Order Code	10120/C
Material	Aluminium
Shape	Circular
Height	50mm
Diameter	202mm
Cutout Hole Diameter	180mm
Recessed Ceiling	Yes
Depth Required	70mm
Indoor	Yes
Adjustable	No

Electrical Characteristics


Gear	External-Included
Fitting + Driver	
Input Voltage	220-240V
50 Hz	Yes
60 Hz	Yes
Safety Class	
Power(Watts)	20W
IP Rating	IP44
Light Source	LED built in
Dimmable	No
F Mark	

Fitting

Input Type	Constant Current
Input Current	320mA

Voltage	60V
Safety Class	
Power(Watts)	19,2W
IP Rating	IP44
Light Source	LED built in
LED Brand	Epistar
F Mark	

Gear

Gear Type	Led Driver
Input Voltage	220-240V
50 Hz	Yes
60 Hz	Yes
Power(Watts)	14,4-21W
Power Factor	0,9
Constant Current	Yes
Output	320mA
Voltage Range	45-66V
IP Rating	IP20
Safety Class	
Dimmable	No
Ambient Temp	45°C
Operating Temp	85°C
Housing Material	Plastic
Output Terminal	Cable

Illumination Data

Colour Temperature	4000K
Lumen Output	1800lm
Light Efficiency	90lm/W
CRI	75

Beam Angle

110°

Завантажено з mamadecor.ua

Illumination Diagram



Packing Info

Box Length

23,5cm

Box Width

7,5cm

Box Height

21,5cm

Box Weight

1,03Kg

Pcs/Carton

10

Barcode

5291889032144

HS Code

9405409900

Certification & Warranty

Warranty

2 Years

Weee Directive

Yes

switch to
one light!

one
LIGHT

