

06 Downlights Fixed LED>The COB Downlight Range Die Cast

10115CA/W/W



15W LED recessed downlight, IP20. Ideal for general lighting applications.

Complete with 350mA driver.

Complies with standard EN60598-1 and any other specific standards.



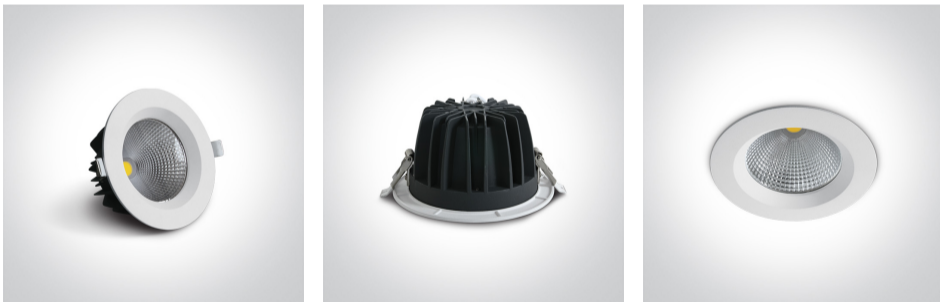
Downloads



Dimensions



Gallery



Physical Specification

Item Group

06 Downlights Fixed LED

Family

The COB Downlight Range Die Cast

Order Code

10115CA/W/W

Colour

White

Material

Die Cast

Shape



Circular

Height

75mm

Diameter	145mm
Cutout Hole Diameter	125mm
Recessed Ceiling	Yes
Depth Required	100mm
Indoor	Yes
Adjustable	No

Electrical Characteristics

Gear	External-Included
Fitting + Driver	
Input Voltage	220-240V
50 Hz	Yes
60 Hz	Yes
Safety Class	
Power(Watts)	15W
IP Rating	IP20
Light Source	LED built in
Dimmable	No
F Mark	

Fitting

Input Type	Constant Current
Input Current	350mA
Voltage	37,2V
Safety Class	
Power(Watts)	13W
IP Rating	IP20
Light Source	LED built in
LED Type	COB
LED Brand	Epistar

Gear

Gear Type

Led Driver

Input Voltage

220-240V

50 Hz

Yes

60 Hz

Yes

Power(Watts)

9-14,7W

Power Factor

0,9

Constant Current

Yes

350mA

25-42V

IP Rating

IP20

Safety Class



Dimmable

No

Ambient Temp

45°C

Operating Temp

85°C

Housing Material

Plastic

Output Terminal

Cable

Brand

Lifud

Protection

Short Circuit and Overload

Illumination Data

Colour Temperature

3000K

Lumen Output

1275lm

Light Efficiency

85lm/W

CRI

80

Beam Angle

60°

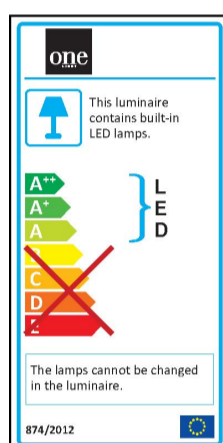
Illumination Diagram



Packing Info

Box Length	18cm
Box Width	8,5cm
Box Height	15cm
Box Weight	0,55Kg
Pcs/Carton	30
Barcode	5291889052012
HS Code	9405409900

Energy Label



Certification & Warranty

Warranty	2 Years
Average Lifetime	30000hrs
Weee Directive	Yes

switch to
one light!

one
LIGHT

