

06 Downlights Fixed LED>The COB Downlight Range Die Cast

10115CA/W/C



15W LED recessed downlight, IP20. Ideal for general lighting applications.

Complete with 350mA driver.

Complies with standard EN60598-1 and any other specific standards.



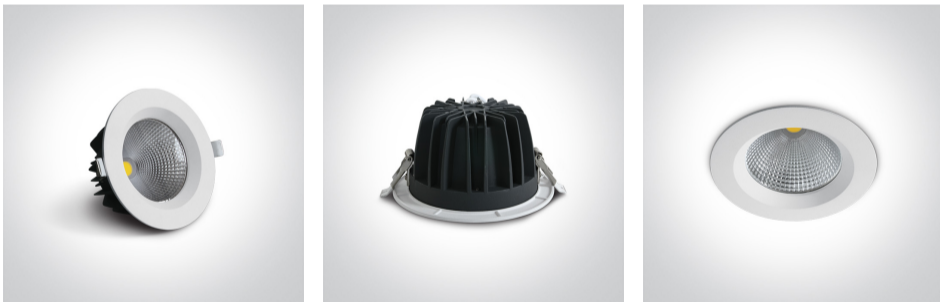
Downloads



Dimensions



Gallery



Physical Specification

Item Group

06 Downlights Fixed LED

Family

The COB Downlight Range Die Cast

Order Code

10115CA/W/C

Colour

White

Material

Die Cast

Shape



Circular

Height

75mm

Diameter	145mm
Cutout Hole Diameter	125mm
Recessed Ceiling	Yes
Depth Required	100mm
Indoor	Yes
Adjustable	No


Electrical Characteristics

Gear	External-Included
Fitting + Driver	
Input Voltage	220-240V
50 Hz	Yes
60 Hz	Yes
Safety Class	
Power(Watts)	15W
IP Rating	IP20
Light Source	LED built in
Dimmable	No
F Mark	


Fitting

Input Type	Constant Current
Input Current	350mA
Voltage	37,2V
Safety Class	
Power(Watts)	13W
IP Rating	IP20
Light Source	LED built in
LED Type	COB
LED Brand	Epistar

Gear

Gear Type	Led Driver
Input Voltage	220-240V
50 Hz	Yes
60 Hz	Yes
Power(Watts)	9-14,7W
Power Factor	0,9
Constant Current	Yes
350mA	25-42V
IP Rating	IP20
Safety Class	
Dimmable	No
Ambient Temp	45°C
Operating Temp	85°C
Housing Material	Plastic
Output Terminal	Cable
Brand	Lifud
Protection	Short Circuit and Overload

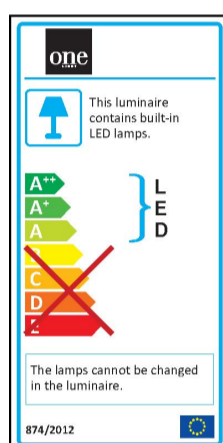
Illumination Data

Colour Temperature	4000K
Lumen Output	1275lm
Light Efficiency	85lm/W
CRI	80
Beam Angle	60°
Illumination Diagram	

Packing Info

Box Length	18cm
Box Width	8,5cm
Box Height	15cm
Box Weight	0,55Kg
Pcs/Carton	30
Barcode	5291889052005
HS Code	9405409900

Energy Label



Certification & Warranty

Warranty	2 Years
Average Lifetime	30000hrs
Weee Directive	Yes

switch to
one light!

one
LIGHT

