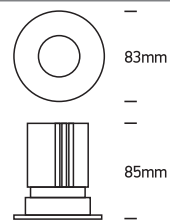


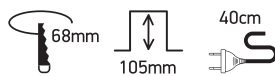
# INSTALLATION MANUAL

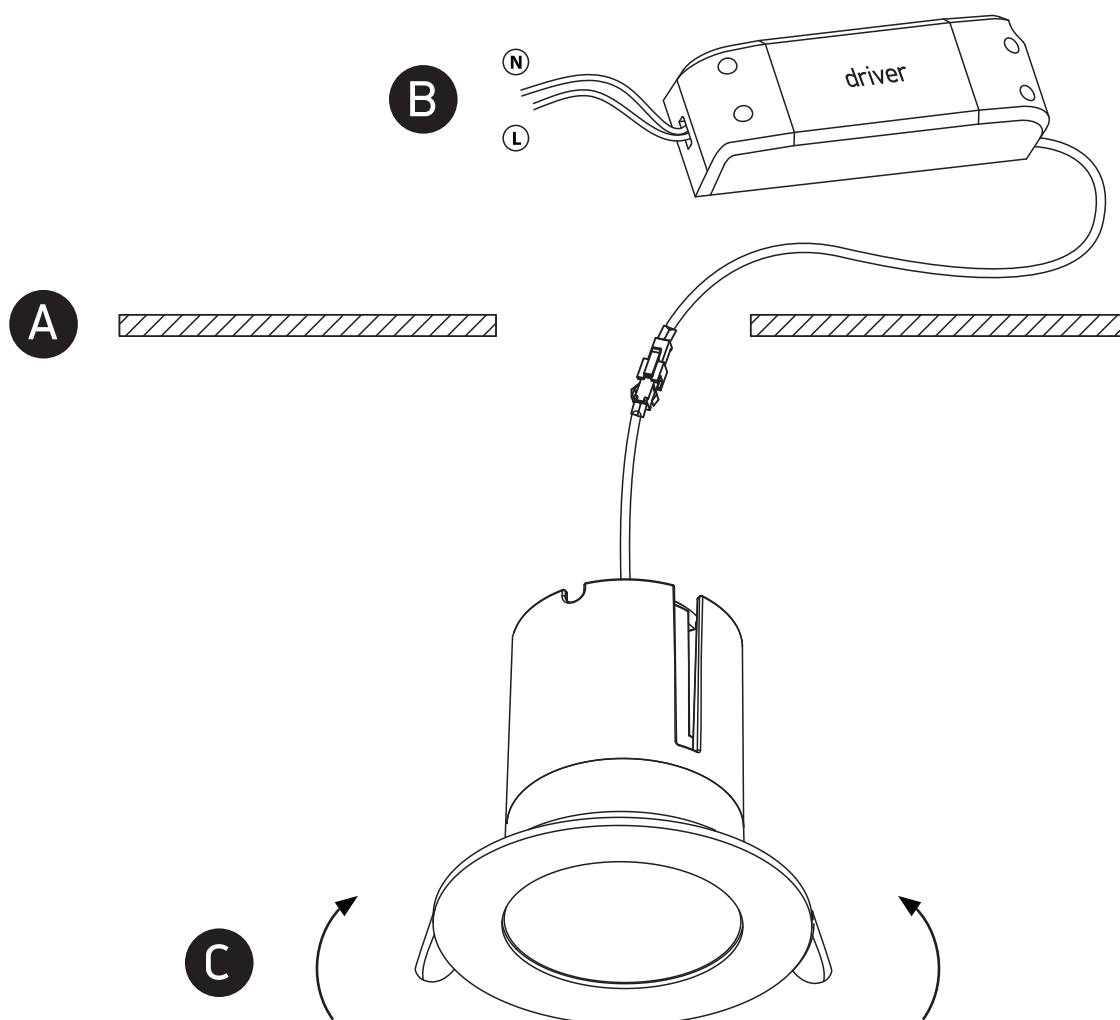
## 10112P

**ecolight**


700mA | COB LED | 12W | IP65 | Die cast

Requires 700mA driver.


 90  
CRI

**one**  
LIGHT


### Warnings:

1. Make sure that the product is installed properly before connecting to electricity.
2. Do not cover the fitting.
3. Maintenance and installation should only be carried out by a professional electrician.