

# INSTALLATION MANUAL

10112L

**ecolight**



**DARK LIGHT**

700mA | 12W | IP20 | Aluminium

Requires 700mA driver.

Reflector must be ordered separately.



**80 CRI**



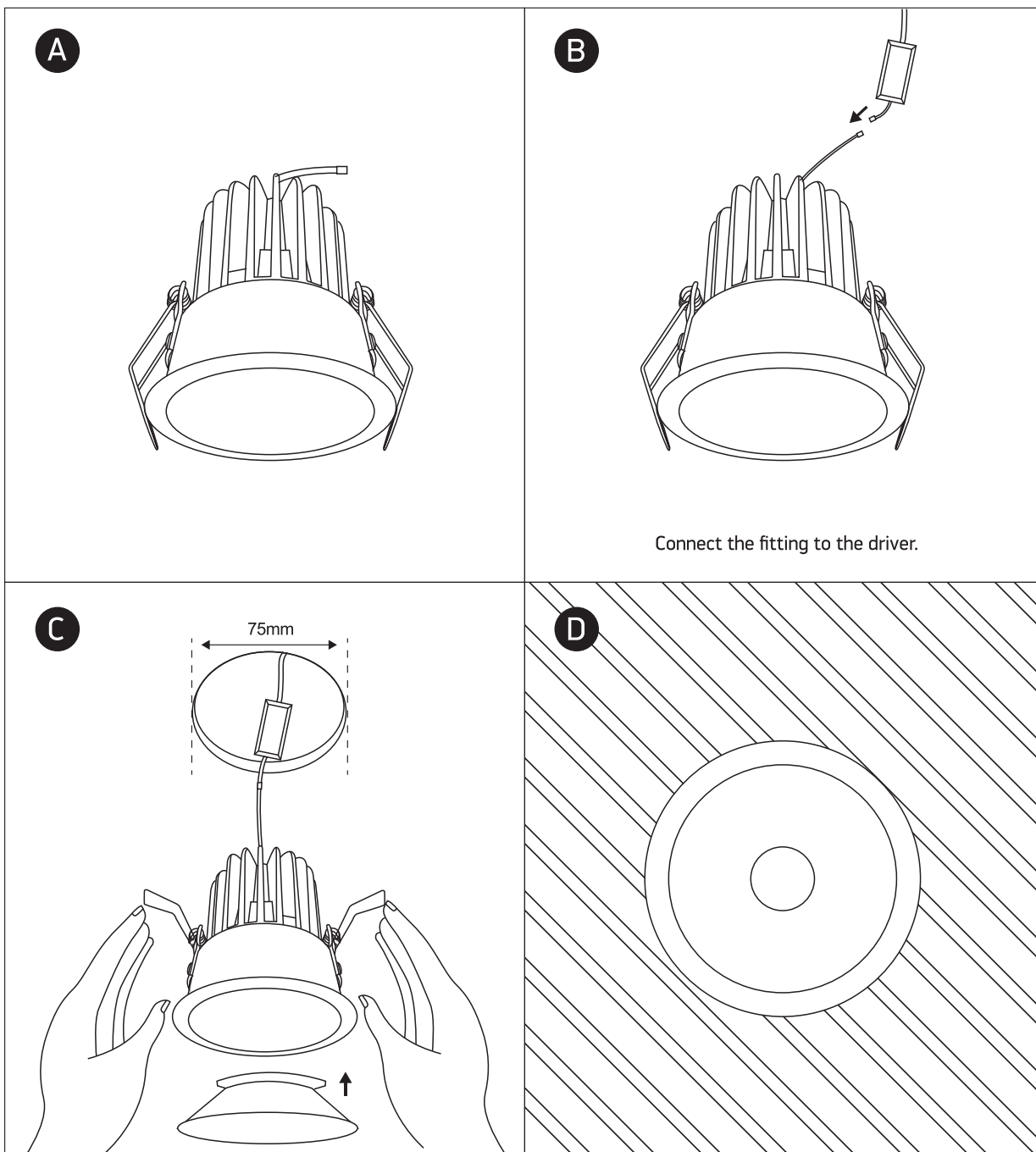
85mm



96mm



**one**  
LIGHT



## Warnings:

1. Make sure that the product is installed properly before connecting to electricity.
2. Do not cover the fitting.
3. Maintenance and installation should only be carried out by a professional electrician.