

# INSTALLATION MANUAL

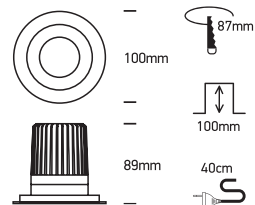
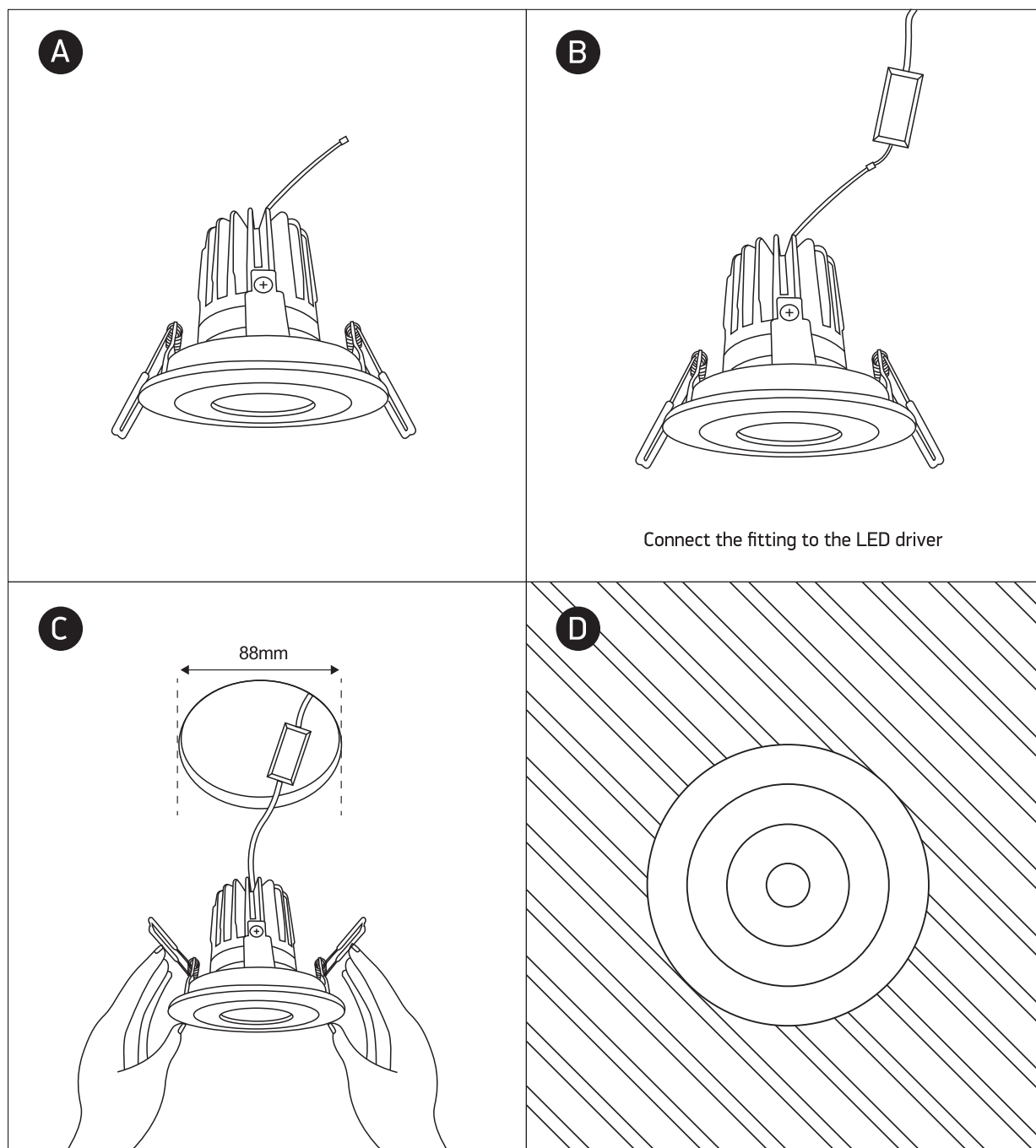
## 10112H

**ecolight**

**DARK LIGHT**
**80 CRI**

700mA | 12W | IP20 | Aluminium

Requires 700mA driver.


**one**  
LIGHT


### Warnings:

1. Make sure that the product is installed properly before connecting to electricity.
2. Do not cover the fitting.
3. Maintenance and installation should only be carried out by a professional electrician.