

# INSTALLATION MANUAL

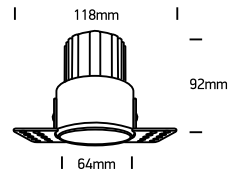
## 10112BTR

**ecolight**

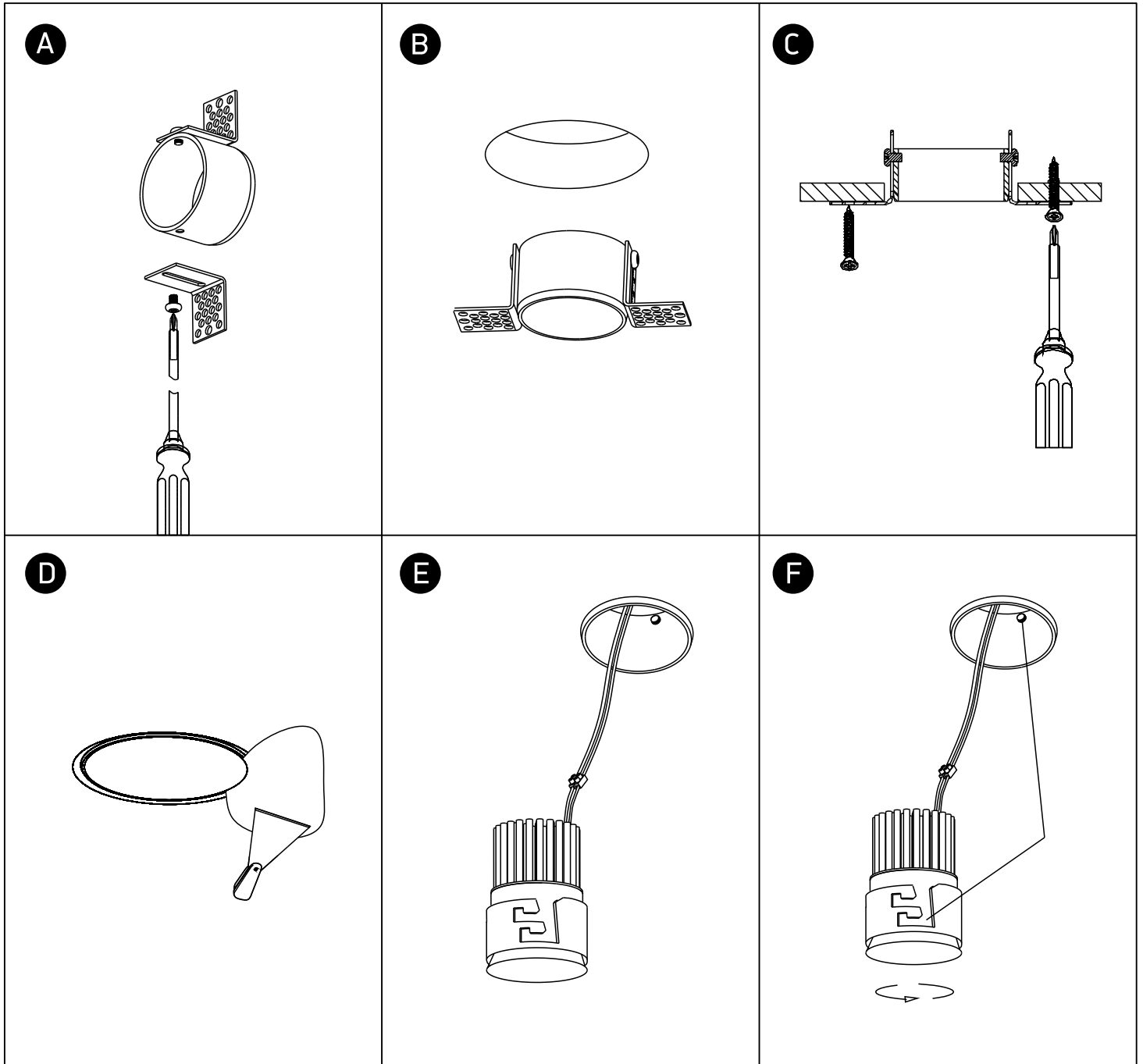
**DARK LIGHT**


700mA | COB LED | 12W | IP20 | Trimless | Aluminium  
Requires 700mA driver.

90 CRI



**one**  
LIGHT



### Warnings:

1. Make sure that the product is installed properly before connecting to electricity.
2. Do not cover the fitting.
3. Maintenance and installation should only be carried out by a professional electrician.