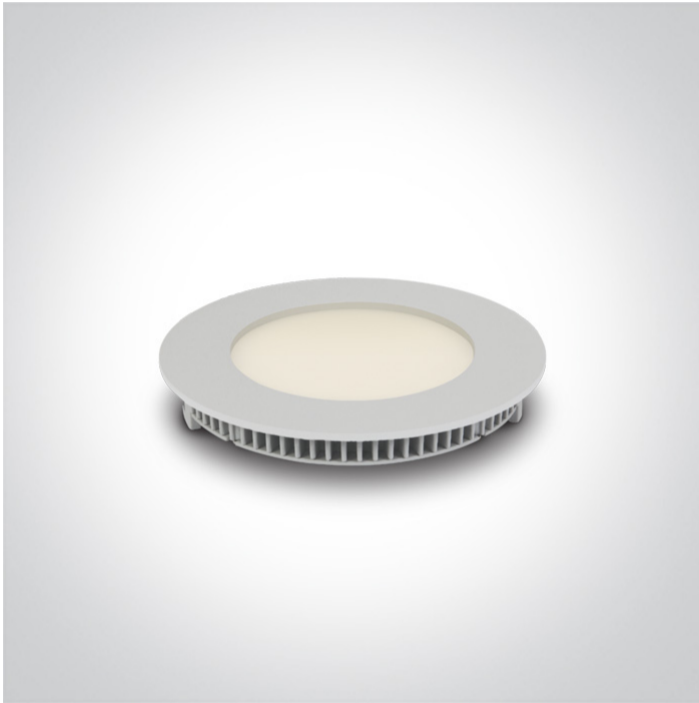


06 Downlights Fixed LED>The 3-12W Round Recessed Panels Die cast

10108FA/W/W



8W slim downlight LED, IP40, ideal for commercial applications such as offices, galleries and showrooms.

Supplied with 300mA non-dimmable LED driver.

Complies with standard EN60598-1 and any other specific standards.



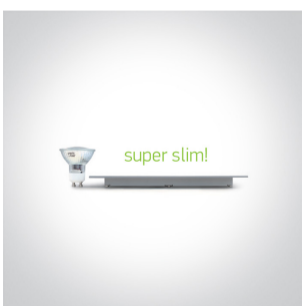
Downloads



Dimensions



Gallery



Related items



89008UT

Physical Specification

Item Group

06 Downlights Fixed LED

Family

The 3-12W Round Recessed Panels Die cast

Order Code

10108FA/W/W

Завантажено з mamadecor.ua

Colour

White

Material

Die Cast

Diffuser Material

Acrylic

Shape

Circular

Height

22mm

Diameter

120mm

Cutout Hole Diameter

108mm

Recessed Ceiling

Yes

Depth Required

50mm

Indoor

Yes

Adjustable

No

Electrical Characteristics

Gear

External-Included

Fitting + Driver

Input Voltage

220-240V

50 Hz

Yes

60 Hz

Yes

Safety Class



Power(Watts)

8W

IP Rating

IP40

Light Source

LED built in

Dimmable

No

F Mark



Fitting

Input Type

Constant Current

Input Current

300mA

Voltage

23V



Safety Class	III
Power(Watts)	6,9W
IP Rating	IP40
Light Source	LED built in
LED Type	SMD 2835
LED Brand	Epistar
LED Number	42

Gear

Gear Type	Led Driver
Input Voltage	220-240V
50 Hz	Yes
60 Hz	Yes
Power(Watts)	4,2-7,2W
Power Factor	0,6
Constant Current	Yes
Output	300mA
Voltage Range	14-24V
IP Rating	IP20
Safety Class	
Dimmable	No
Ambient Temp	50°C
Operating Temp	75°C
Housing Material	Plastic
Brand	Lifud

Illumination Data

Colour Temperature	3000K
Lumen Output	480lm
Light Efficiency	60lm/W
CRI	80

Beam Angle

120°

Завантажено з mamadecor.ua

Illumination Diagram



Packing Info

Box Length

18,5cm

Box Width

3,1cm

Box Height

13cm

Box Weight

0,250Kg

Pcs/Carton

40

Barcode

5291889044062

HS Code

9405109890

Certification & Warranty

Warranty

2 Years

Average Lifetime

30000 hours

Weee Directive

Yes

switch to
one light!

one
LIGHT

