

## 02 Recessed Spots Fixed LED>The 7W COB IP65 Range

# 10107DB/W/W



7W COB LED recessed spot suitable for indoor and outdoor installation, IP65.

Requires 700mA driver.

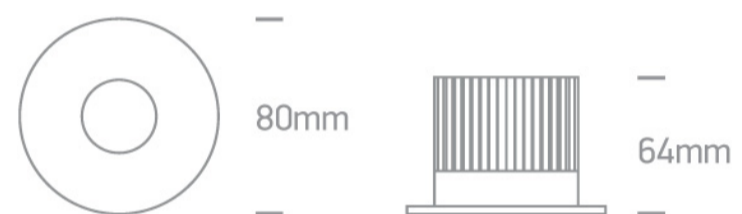
Complies with standard EN60598-1 and any other specific standards.



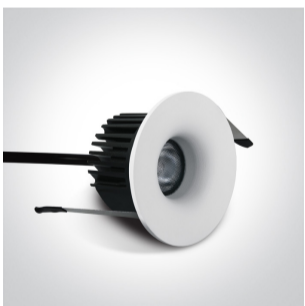
### Downloads



### Dimensions



### Gallery



### Must be ordered separately



89015A



89015AT


## Physical Specification

|                      |                             |
|----------------------|-----------------------------|
| Item Group           | 02 Recessed Spots Fixed LED |
| Family               | The 7W COB IP65 Range       |
| Order Code           | 10107DB/W/W                 |
| Colour               | White                       |
| Material             | Aluminium                   |
| Shape                | Circular                    |
| Height               | 64mm                        |
| Diameter             | 80mm                        |
| Cutout Hole Diameter | 60mm                        |
| Recessed Ceiling     | Yes                         |
| Depth Required       | 80mm                        |
| Indoor               | Yes                         |
| Outdoor              | Yes                         |
| Adjustable           | No                          |


## Electrical Characteristics

## Fitting

|               |                  |
|---------------|------------------|
| Input Type    | Constant Current |
| Input Current | 700mA            |
| Safety Class  | III              |
| Power(Watts)  | 7W               |
| IP Rating     | IP65             |
| Light Source  | LED built in     |

|              |   |
|--------------|---|
| LED Type     | COB   |
| LED Brand    | Bridgelux   |
| Cable Length | 40cm  |
| F Mark       |  |

## Illumination Data

|                      |   |
|----------------------|---|
| Colour Temperature   | 3000K   |
| Lumen Output         | 500lm   |
| Light Efficiency     | 71,42lm/W   |
| CRI                  | 90  |
| Beam Angle           | 36°   |
| Illumination Diagram |  |
| Dark Light           | Yes   |

## Packing Info

|            |               |
|------------|---------------|
| Box Length | 9cm           |
| Box Width  | 9cm           |
| Box Height | 6,5cm         |
| Box Weight | 0,232kg       |
| Pcs/Carton | 50            |
| Barcode    | 5291889050889 |
| HS Code    | 9405409900    |

## Certification &amp; Warranty

Warranty

5 Years

[Завантажено з mamadecor.ua](http://mamadecor.ua)

Weee Directive

Yes

switch to  
**one light!**

one  
LIGHT

