

## 02 Recessed Spots Fixed LED&gt;The Fire Rated IP65 Range

## 10106PF/W



6W COB LED fire rated recessed spot IP65 with interchangeable rings.

Requires 350mA driver. Ring must be ordered seperately.

Complies with standard EN60598-1 and any other specific standards.



## Downloads



## Dimensions

Dimensions are complete with the ring.



## Gallery



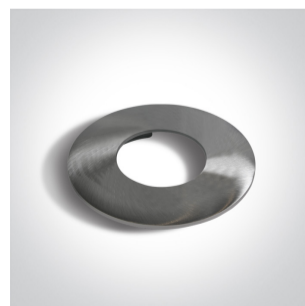
## Must be ordered separately



050042/B



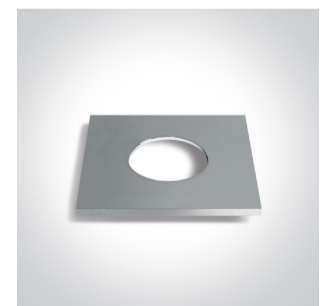
050042/C



050042/MC



050042/W



050042A/C



050042A/MC





89008

## Physical Specification


Item Group	02 Recessed Spots Fixed LED
Family	The Fire Rated IP65 Range
Order Code	10106PF/W
Material	Die Cast
Shape	Circular
Height	70mm
Diameter	83mm
Cutout Hole Diameter	68mm
Recessed Ceiling	Yes
Depth Required	90mm
Indoor	Yes
Outdoor	Yes
Adjustable	No

## Electrical Characteristics

## Fitting

Input Type	Constant Current
Input Current	350mA
Safety Class	
Power(Watts)	6W
IP Rating	IP65
Light Source	LED built in
LED Type	COB
LED Brand	Bridgelux
Cable Length	40cm
F Mark	

## Illumination Data

Colour Temperature	3000K
Lumen Output	500lm
Light Efficiency	83,33lm/W
CRI	80
Beam Angle	40°
Illumination Diagram	

## Packing Info

Box Length	12cm
Box Width	10cm
Box Height	8,5cm
Box Weight	0,286kg
Pcs/Carton	20
Barcode	5291889047056
HS Code	9405409900

## Certification &amp; Warranty

Warranty	3 Years
Weee Directive	Yes

switch to  
**one light!**

one  
LIGHT

