

02 Recessed Spots Fixed LED>Fixed Spots

10103L/W/35



3x1W LED recessed spot IP20.

Requires 350mA driver.

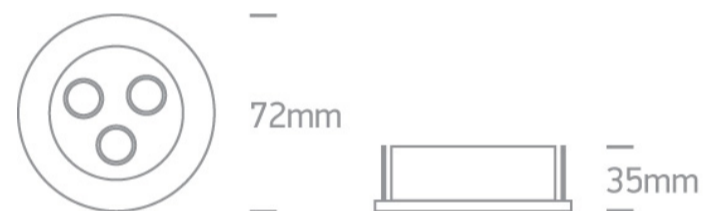
Complies with standard EN60598-1 and any other specific standards.



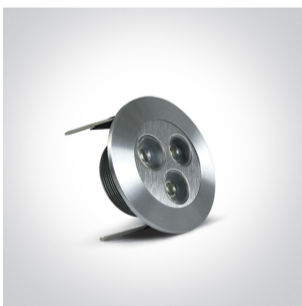
Downloads



Dimensions



Gallery



Must be ordered separately



89004



89004T

Physical Specification

Item Group	02 Recessed Spots Fixed LED
Family	Fixed Spots
Order Code	10103L/W/35
Colour	Aluminium
Material	Natural Aluminium
Shape	Circular
Height	35mm
Diameter	72mm
Cutout Hole Diameter	60mm
Recessed Ceiling	Yes
Depth Required	40mm
Indoor	Yes
Adjustable	No


Electrical Characteristics

Fitting

Input Type	Constant Current
Input Current	350mA
Safety Class	
Power(Watts)	3x1W
IP Rating	IP20
Light Source	LED built in
LED Number	3
Cable Length	40cm
F Mark	

Illumination Data

Colour Temperature	3000K
--------------------	-------

Lumen Output	135lm
Light Efficiency	45lm/W
Beam Angle	35°
Illumination Diagram	

Packing Info

Box Length	8cm
Box Width	8cm
Box Height	4,5cm
Box Weight	0,137kg
Pcs/Carton	100
Barcode	5291889020431
HS Code	9405409900

Certification & Warranty

Warranty	2 Years
Weee Directive	Yes

switch to
one light!

one
LIGHT

