

# INSTALLATION MANUAL

## 10103BTR

**ecolight**



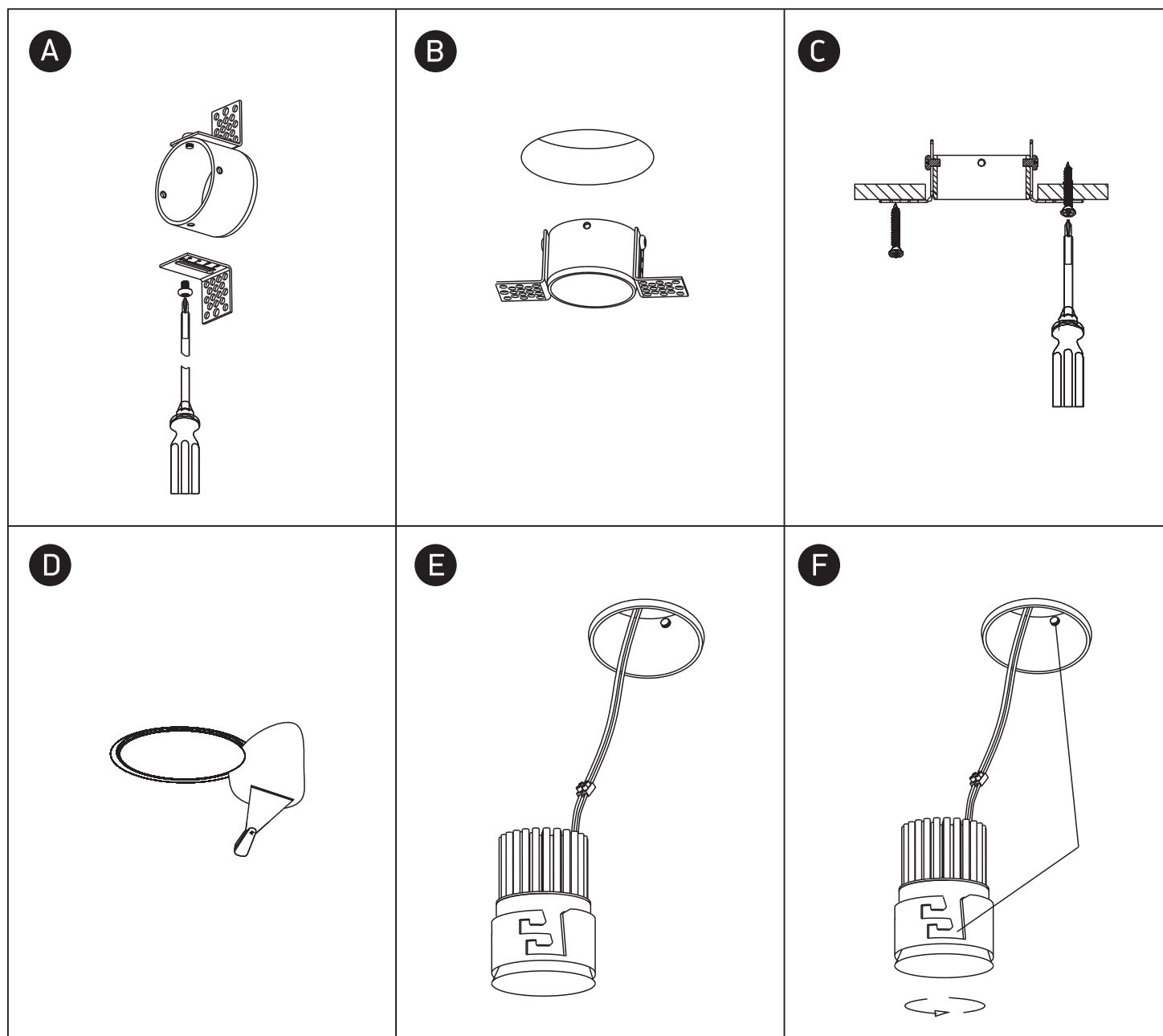
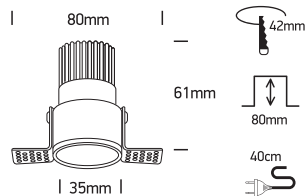
DARK  
LIGHT



90  
CRI

350mA | COB LED | 3W | IP20 | Trimless | Aluminium

Requires 350mA driver.  
2-Step fitting.



### Warnings:

1. Make sure that the product is installed properly before connecting to electricity.
2. Do not cover the fitting.
3. Maintenance and installation should only be carried out by a professional electrician.