

LUCIDE

GENERAL SPECIFICATIONS



RECOMMENDED LUCIDE LIGHT SOURCE

49034/05/62

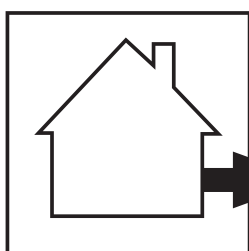
Light source dimmable : Yes
Light source incl. : No

General

Dimensions LxWxH : 14.7 cm x 12.0cm x 21.8 cm
Heigth minimum : 21.8 cm
Heigth maximum : 21.8cm
Dimensions shade LxWxH :
Main material : Aluminum
Ceiling rose material :
Color : Black
Style : Modern
Shape : Cylinder
Weight : 0.88kg
Warranty : 2 years

Product specifications

Dimmable : No
Light direction : Around (Diffuse)
Adjustable in height: No
Directional : Not Directional
Cable : No
Cable length :
Sensor : With day/night sensor
Control : Light Switch Control
IP-Class : 44
Electric class : 1
Light source including ? : No
Lamp socket : E27
Light source number : 1
Power requirements : 220-240V-50Hz
Bulb type & maximum wattage : E27 Max 15W



IP44

IP54

IP65

IP67

Explanation of IP numbers for degrees of protection, see safety instruction manual in the box.

For more specifications of this product please visit
www.lucide.com

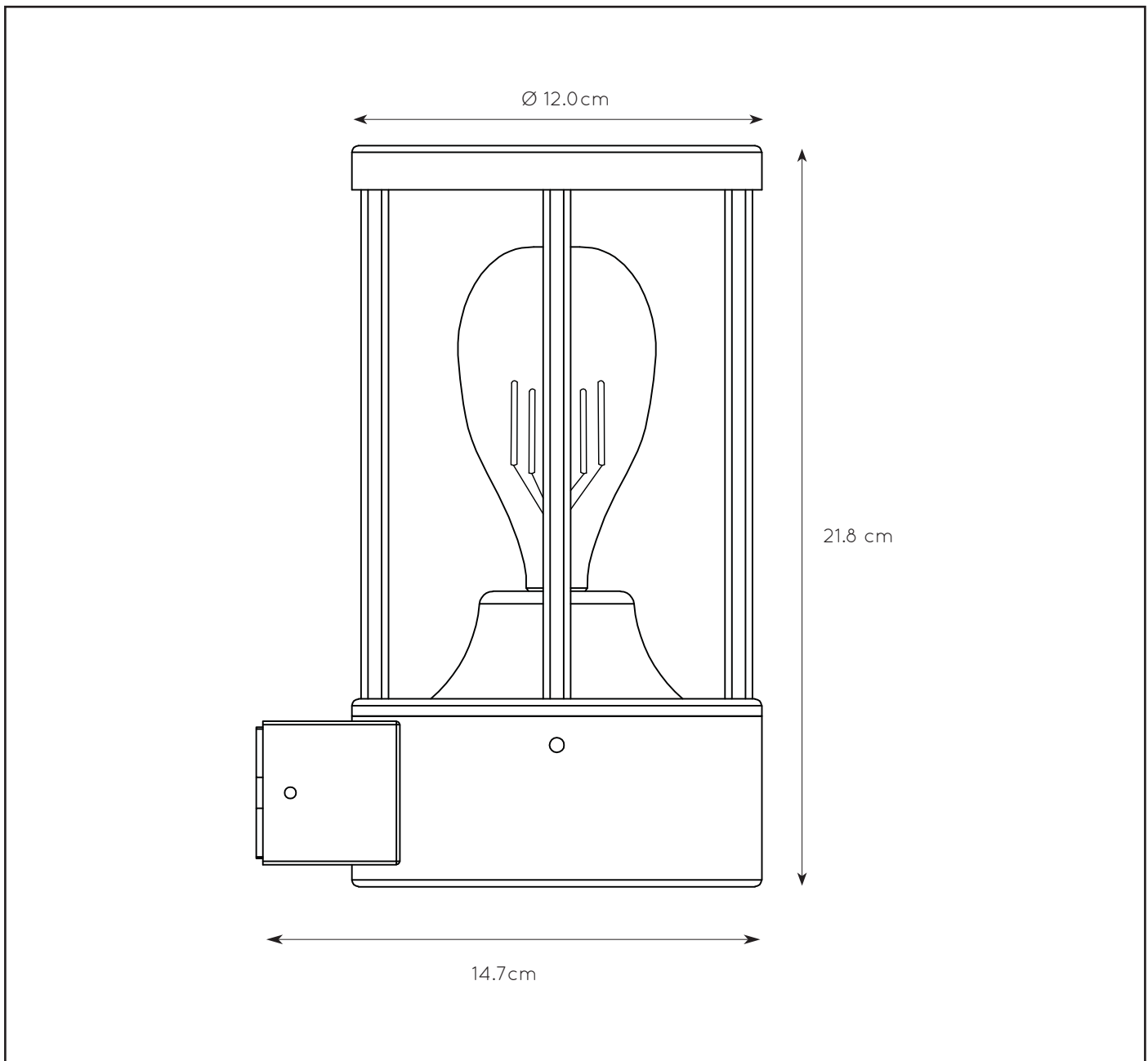
LUCIDE

TECHNICAL DRAWING & DIMENSIONS

LORI

Item number : 14893/01/30

EAN code : 5411212144300

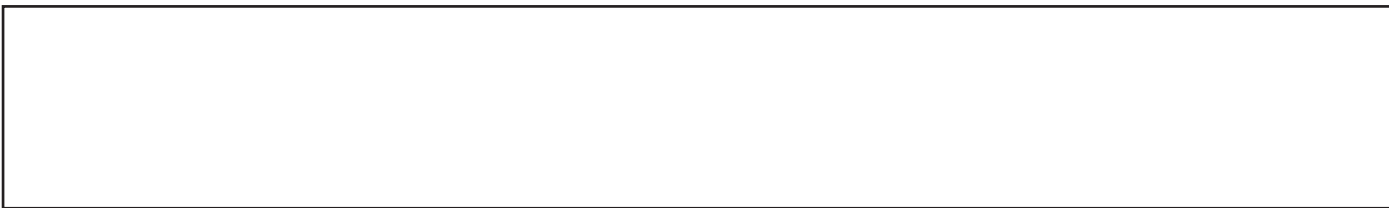
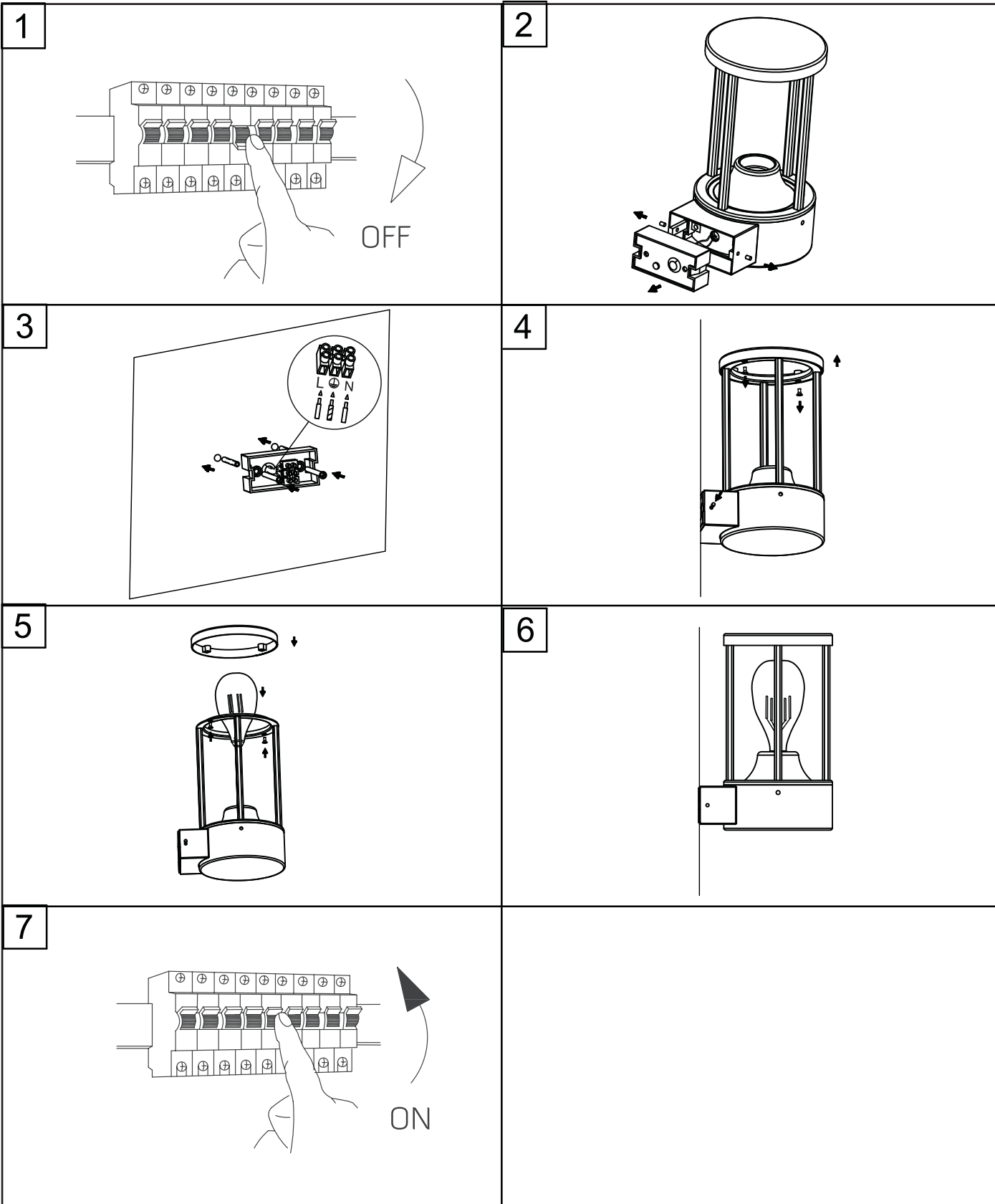


For more specifications, dimensions please visit

www.lucide.com

LUCIDE

INSTALLATION DRAWING SPECIFICATIONS



L U C I D E

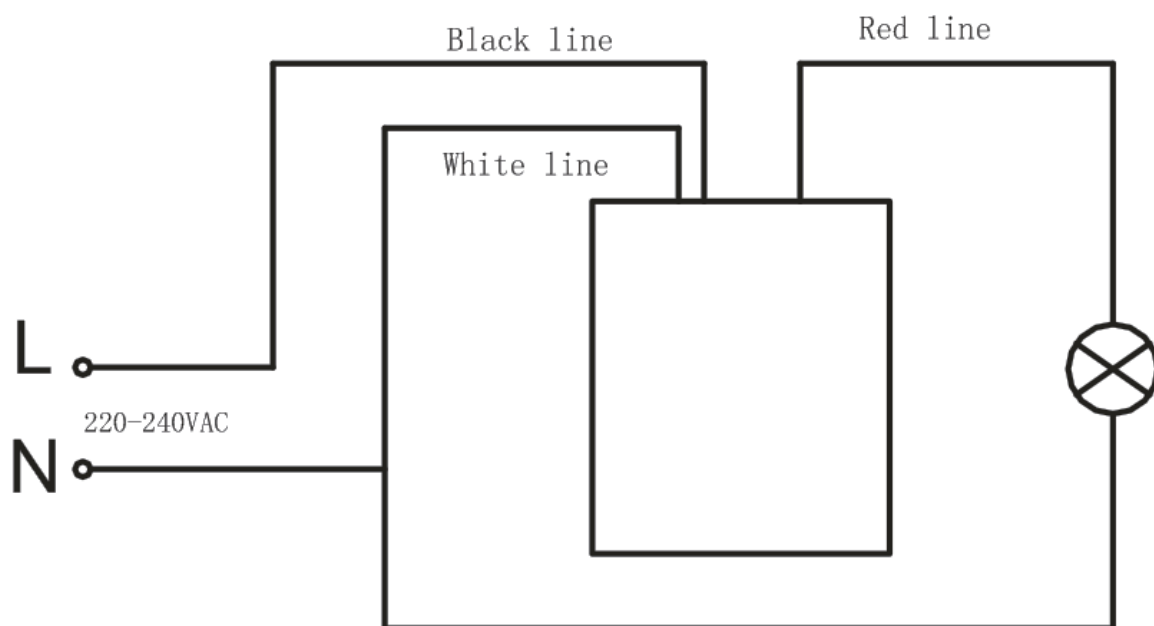
INSTALLATION DRAWING SPECIFICATIONS

Control Sensor Technique Index & Directions

Main technique index

- 1) Light control: Open-controlled: $\leq 25\text{LUX}$, Off-controlled: $30\text{-}60\text{LUX}$
- 2) Frequency: $50\text{-}60\text{Hz}$
- 3) Lighting Control Power: 100W
- 4) Voltage: $220\text{-}240\text{VAC}$
- 5) Consume power: $\leq 1.0\text{W}$

I. How to circuit Illustration:



II. Caution Please avoid installing the controller in the open air.