

PRODUCT DATASHEET

TRACK SP D75 25 W 4000 K 90RA NFL BK

TRACKLIGHT SPOT D75 25W | 3-phase tracklight spot with integrated control gear, low wattage



AREAS OF APPLICATION

- Direct replacement for luminaires using HID lamps
- Accent lighting
- Fashion shops, accessories shops
- Retail
- Hotels, restaurants, shops

PRODUCT BENEFITS

- Included 3-phase adapter compatible with common tracks (GLOBAL, EUTRAC, POWERGEAR, STAFF, NORLUX, NUCO, NORDIC)
- Deep reflector and black antiglare ring for minimized glare (UGR <16)
- Reflector easily replaceable thanks to bayonet catch and rubber suction pad
- No distraction of attention from the illuminated objects thanks to reduced design
- Low flicker light thanks to special electronic control gear
- 5 years guarantee

PRODUCT FEATURES

- Compact tracklight spot with integrated control gear
- Rotation angle: 350°, tilt angle: 90°
- Luminaire efficacy: up to 80 lm/W
- Available with color temperature 3000 K or 4000 K
- Very good color rendering index R_a : > 90
- Color rendering index R_{a9} : > 50



- Initial color consistency: ≤ 3 SDCM
- Equipped with reflectors with 24° beam angle
- Follows the unified LEDVANCE design language (SCALE design)
- Robust die-cast aluminum housing
- Available in matt white (like RAL9016), matt black (like RAL9004) and concrete grey (like RAL7042)

TECHNICAL DATA

Electrical data

Nominal wattage	25.00 W
Operating mode	Integrated LED driver
Nominal voltage	220...240 V
Mains frequency	50/60 Hz
Power factor λ	≥ 0.90
Max. no. of lum. on circuit break. B16 A	30
Max. no. of lum. on circuit break. C10 A	24
Max. no. of lum. on circuit break. C16 A	38
Inrush current	< 23 A
Total harmonic distortion	< 15 %
Inrush current time T_{h50}	< 3.4 μ s

Luminaire control gear data

Low flicker	Yes
Output current	600 mA
ECG - Output ripple current	< 10 %

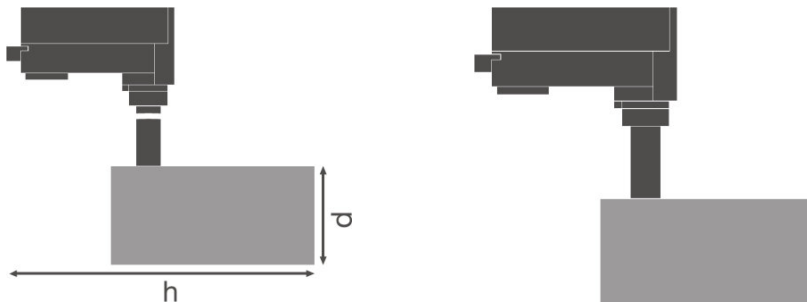
Photometrical data

Color temperature	4000 K
Color rendering index Ra	90
Light color (designation)	Cool White
Luminous flux	1900 lm
Luminous efficacy	80 lm/W
Standard deviation of color matching	≤ 3 sdcM

Light technical data

Beam angle	24 °
------------	------

Dimensions & weight



Diameter	75.0 mm
Height	255.0 mm
Product weight	770.00 g

Colors & materials

Product color	Black
Housing color	Black
Body material	Aluminum
Cover material	Polymethylmethacrylate (PMMA)

Temperatures & operating conditions

Ambient temperature range	-10...+40 °C
----------------------------------	--------------

Lifespan

Number of switching cycles	50000
Lifespan L70/B50 at 25 °C	50000 h
Lifespan L80/B10 at 25 °C	45000 h
Lifespan L90/B10 at 25 °C	30000 h

Additional product data

Mounting type	Surface
Mounting location	Mounting track
Low flicker	Yes

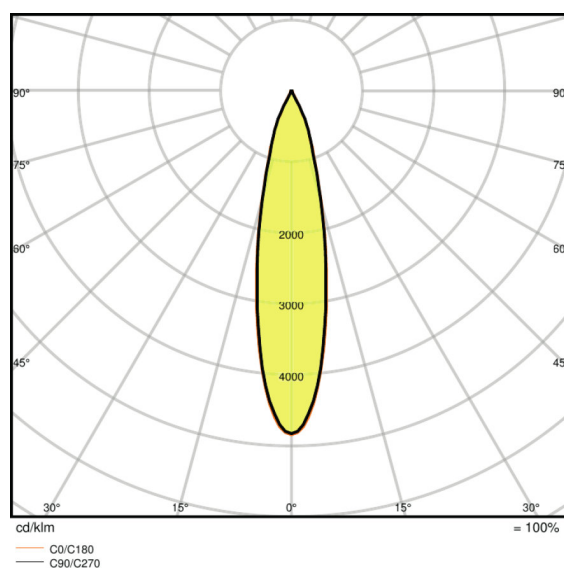
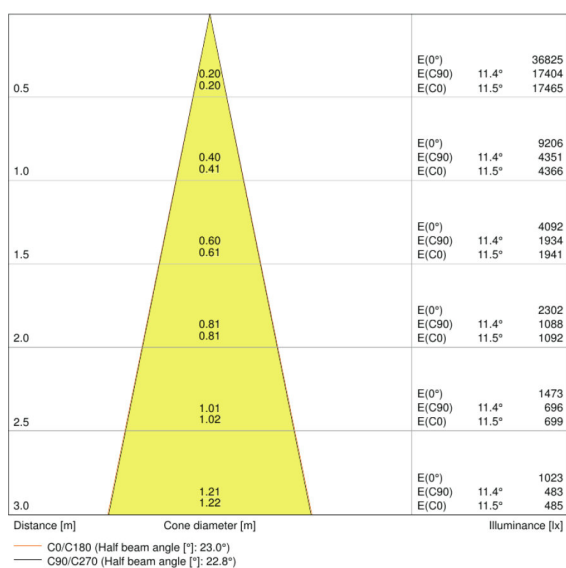
Capabilities

Dimmable	No
Type of connection	Adapter, 3-phase
LED module replaceable	Not replaceable

Certificates & standards

Type of protection	IP20
Protection class	I
Protection class IK (shock resistance)	IK03
Glow Wire Test according to IEC 60695-2-12	650 °C
Photobiological safety group EN62778	RG1
Standards	CE/CB/ENEC/TÜV SÜD/EAC/RoHS

Light Distribution



LDC typ cone

LDC typ polar

EQUIPMENT / ACCESSORIES

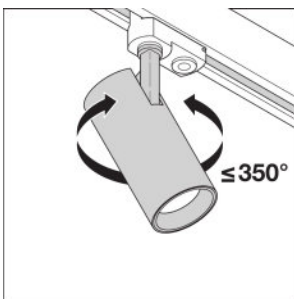
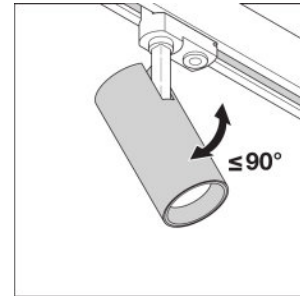
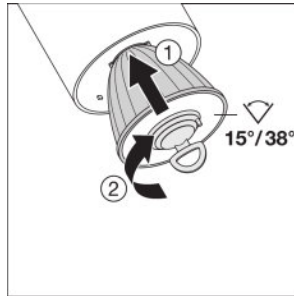
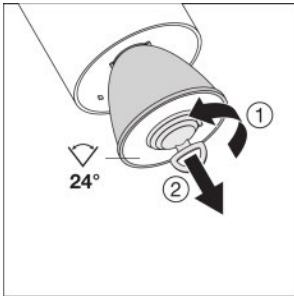
– Accessory reflectors with 15° or 38° beam angle available

LOGISTICAL DATA

Product code	Packaging unit (Pieces/Unit)	Dimensions (length x width x height)	Gross weight	Volume
4058075113589	Folding carton box 1	90 mm x 100 mm x 285 mm	830.00 g	2.57 dm ³
4058075113596	Shipping carton box 4	375 mm x 110 mm x 295 mm	3557.00 g	12.17 dm ³

The mentioned product code describes the smallest quantity unit which can be ordered. One shipping unit can contain one or more single products. When placing an order, for the quantity please enter single or multiples of a shipping unit.

ADDITIONAL CATALOG INFORMATION



REFERENCES / LINKS

For Guarantee see

▶ www.ledvance.com/guarantee

DISCLAIMER

Subject to change without notice. Errors and omission excepted. Always make sure to use the most recent release.