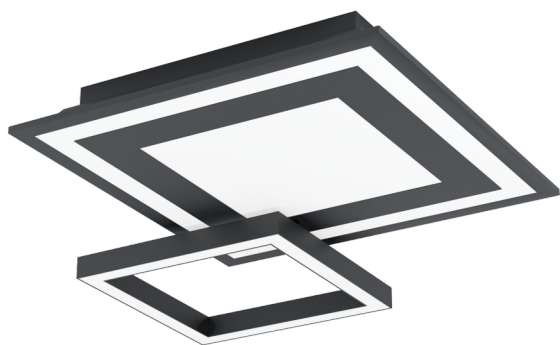


99312

SAVATARILA-C



Общая информация

| | |
|-----------------|---------------------------|
| Material number | 99312 |
| Type | настенно-потол. светильни |
| Product segment | Indoor |
| Theme | ECO |

Размеры

| | |
|------------------------|--------------|
| Article Height (in mm) | 70 |
| Article Width (in mm) | 450 |
| Article Length (in mm) | 450 |
| Net Weight | 2,4 Kilogram |

Материал & Цвет

| | |
|----------------------|---------|
| Enclosure Material | сталь |
| Enclosure Colour | черный |
| Glass/Shade Material | пластик |
| Glass/Shade Color | белый |

Функциональность

| | |
|-------------|---|
| Switch Type | нет |
| Function | несменный LED упр- с пульта ДУ и приложения BLE, CCT, RGB |
| Battery | No |

99312

SAVATARILA-C



Техническая информация

| | |
|-------------------|------------------|
| Protection Degree | IP20 |
| Protection Class | 2 |
| Mains Voltage | 220-240V,50/60Hz |
| Dimmable | Yes |
| max. Wattage (1) | 20W |

Источник света □

| | |
|--|-------|
| Nominal Luminous Flux (in lm) | 2750 |
| Equivalence With Incandescent Lamp (W) | 164 |
| Color Temperature | 18 |
| Nominal Lifetime (in h) | 25000 |
| Switching Cycles | 15000 |
| Colour Rendering Index (Ra, CRI) | >80 |
| Energy Efficiency Class | A++ |
| Rated Lamp Power (0,1W precision) | 20 |
| Color Tolerance (LED, SDCM) | <6 |

