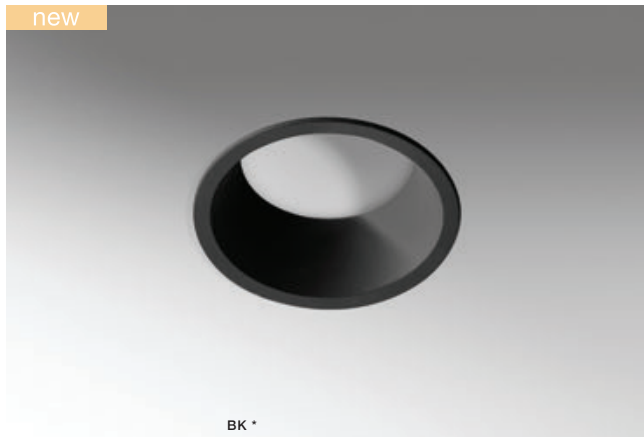




AIDA ROUND

Downlights



BK *

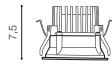
AIDA ROUND 9W 3000K

LED integrated

| | | |
|---|-------------------------|------------------|
| voltage: 230V | LED 9W 700lm 3000K | |
| IP20 | technical specification | |
| installation place <input type="checkbox"/> | inlet opening 9,5cm | beam angle: 120° |

COLOUR / NEW INDEX NO.

- WHITE (WH) **AZ4218**
- BLACK (BK) **AZ4220**



Ø 10,2



WH *

AIDA ROUND 16W 3000K

LED integrated

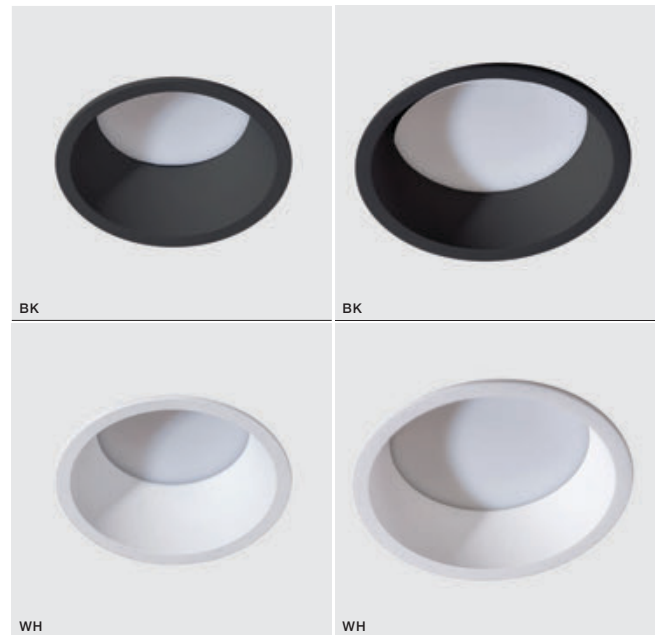
| | | |
|---|-------------------------|------------------|
| voltage: 230V | LED 16W 1300lm 3000K | |
| IP20 | technical specification | |
| installation place <input type="checkbox"/> | inlet opening 13,5cm | beam angle: 120° |

COLOUR / NEW INDEX NO.

- WHITE (WH) **AZ4222**
- BLACK (BK) **AZ4224**



Ø 14,5



* - EXPLANATION SHORTCUT PAGE 2 (E)



AIDA SQUARE

Downlights

119



AIDA SQUARE 9W 3000K

LED integrated

voltage: 230V

LED 9W 700lm 3000K



IP20



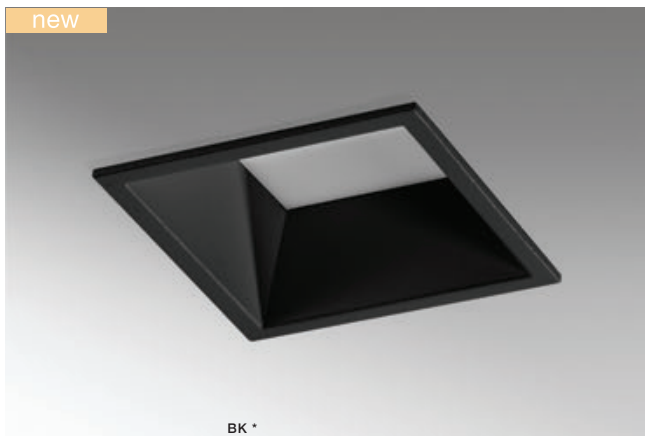
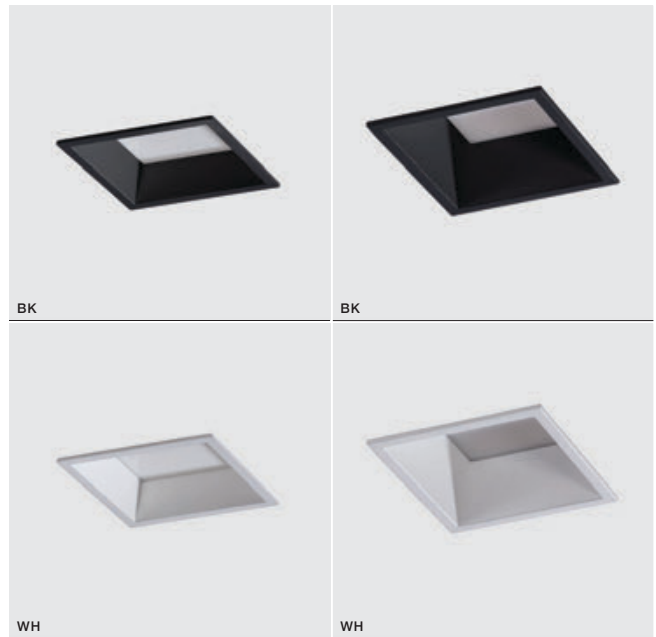
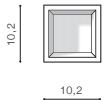
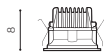
technical specification

installation place inlet opening 9,1x9,1cm

beam angle: 120°

COLOUR / NEW INDEX NO.

- WHITE (WH) **AZ4226**
- BLACK (BK) **AZ4227**



AIDA SQUARE 16W 3000K

LED integrated

voltage: 230V

LED 16W 1300lm 3000K



IP20



technical specification

installation place inlet opening 13x13cm

beam angle: 120°

COLOUR / NEW INDEX NO.

- WHITE (WH) **AZ4228**
- BLACK (BK) **AZ4229**

